

COMPANY: DEER LAKE OIL & GAS INC.

WELL: DEER LAKE OIL & GAS ET AL

FIELD: WESTERN ADVENTURE N

EXPLOATORY

PROVINCE: NEWFOUNDLAND

PROVINCE: NEWFOUNDLAND		<div>Schlumberger</div>		SLIM ACCESS LITHO DENS	
Field: EXPLORATORY		NORTHING: 5,456,519		Elev	
Location: NORTHING: 5,456,519		EASTING: 482,797			
Well: DEER LAKE OIL & GAS ET AL		Permanent Datum: _____		GROUND LEVEL _____ Elev _____	
Company: DEER LAKE OIL & GAS INC.		Log Measured From: _____		DRILL FLOOR _____ Elev 2.5	
		Drilling Measured From: _____		DRILL FLOOR _____	
API Serial No. 2000-120-01-01				NOB 5,4	
Logging Date 17-JAN-2001					
Run Number TWO					
Depth Driller 1584 m					
Schlumberger Depth 1575 m					
Bottom Log Interval 1572 m					
Top Log Interval 873 m					
Casing Driller Size @ Depth 89,000 mm @ 872 m					
Casing Schlumberger 873 m					
Bit Size 75,770 mm					
Type Fluid In Hole POLYMER - KCL					
Density 1068 kg/m3		34 s			
Fluid Loss PH					
Source Of Sample MEASURED					
RM @ Measured Temperature 0.162 ohm.m @ 5 degC					
RMF @ Measured Temperature @					
RMC @ Measured Temperature @					
Source RMF RMC					
RM @ MRT 0.066 @ 44		NO SAMPLE NO SAMPLE @ 44			
Maximum Recorded Temperatures 44 degC 44					
Circulation Stopped 16-JAN-2001 10:00					
Logger On Bottom 17-JAN-2001 18:40					
Unit Number 19		Location DARTNMOUTH			
Recorded By KELLI SASCO					
Witnessed By STAN PODULSKY					

AL
O.1

[illegible]

Logging Date			
Run Number			
Depth Driller			
Schlumberger Depth			
Bottom Log Interval			
Top Log Interval			
Casina Driller Size @ Depth	@	@	

Viscosity		
P H		

Temperature	@	@
-------------	---	---

Temperature	@	@
1	@	@

Temperature	@	@
RMC		

RMF @ MRT	@	@	@	@

Time	Temperature	Time	Temperature

	Time				

Location		

OTHER SERVICES1	OTHER SERVICES2
OS1: SLIM LITHO DENSITY	OS1:
OS2: SLIM DUAL LATEROLOG	OS2:
OS3: SLIM BHC SONIC	OS3:
OS4:	OS4:
OS5:	OS5:

LOGS RUN TO 1575 M, AS PER CLIENT REQUEST

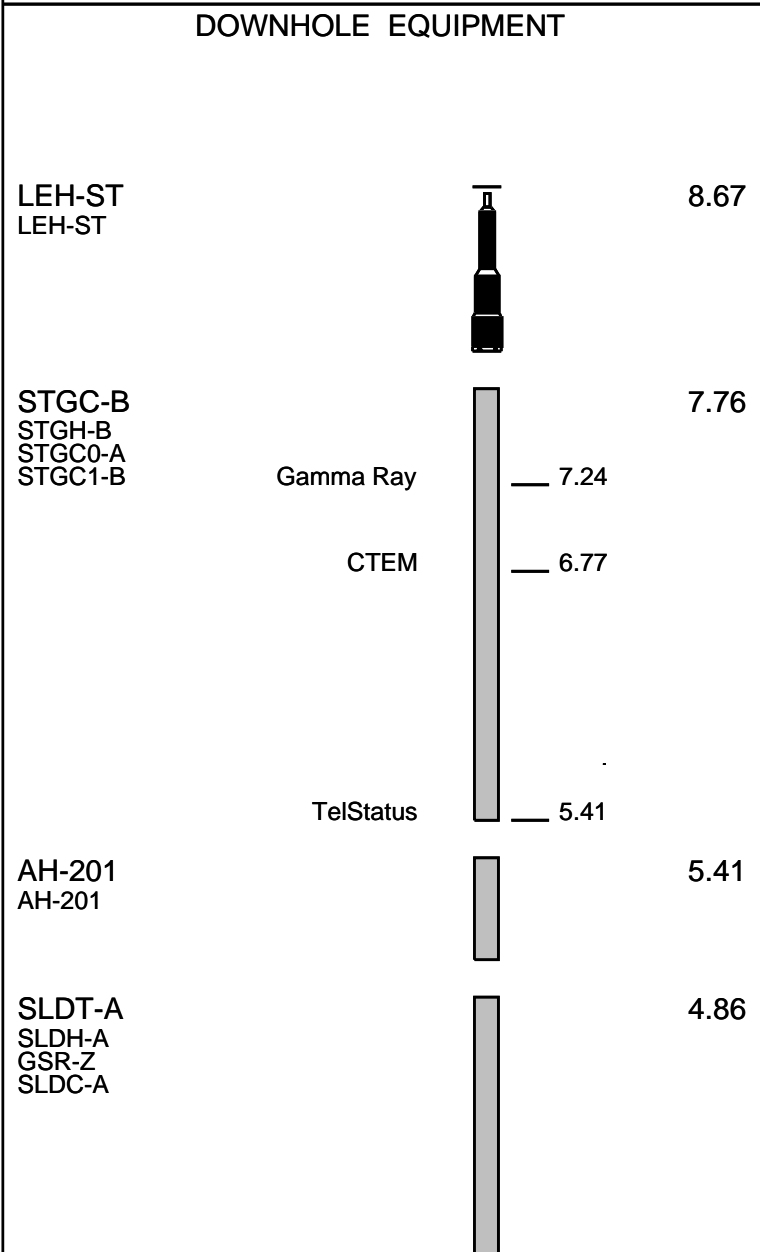
1ST DESCENT: GAUGE RUN (GR. TEL. MEETRY)

1ST DESCENT: CIRCLE RUN (GR, TELEMETRY)					
2ND DESCENT: LITHO DENSITY, GR					
3RD DESCENT: BHC SONIC					
4TH DESCENT: DUAL LATEROLOG					
ALL TOOLS RUN SLICK					
RIG: LONGYEAR SUPER 50					
CREW 19: MIKE DIGGDON, STEVE BEATON					
RUN 1			RUN 2		
SERVICE ORDER #:		6418567	SERVICE ORDER #:		
PROGRAM VERSION:		9C0-413	PROGRAM VERSION:		
FLUID LEVEL:			FLUID LEVEL:		
LOGGED INTERVAL	START	STOP	LOGGED INTERVAL	START	STOP

EQUIPMENT DESCRIPTION					
RUN 1			RUN 2		

SURFACE EQUIPMENT

WITM (DTS)-A



LS_PEF 2.74
MS_PEF 2.60
LS 2.55
MS 2.48
SS Tool 2.42

SPCS-B
SPCS-B

2.09

CAL

1.65

BNS-CCS

HV DF
Tension ACCZ
TOOL ZERO 0.00

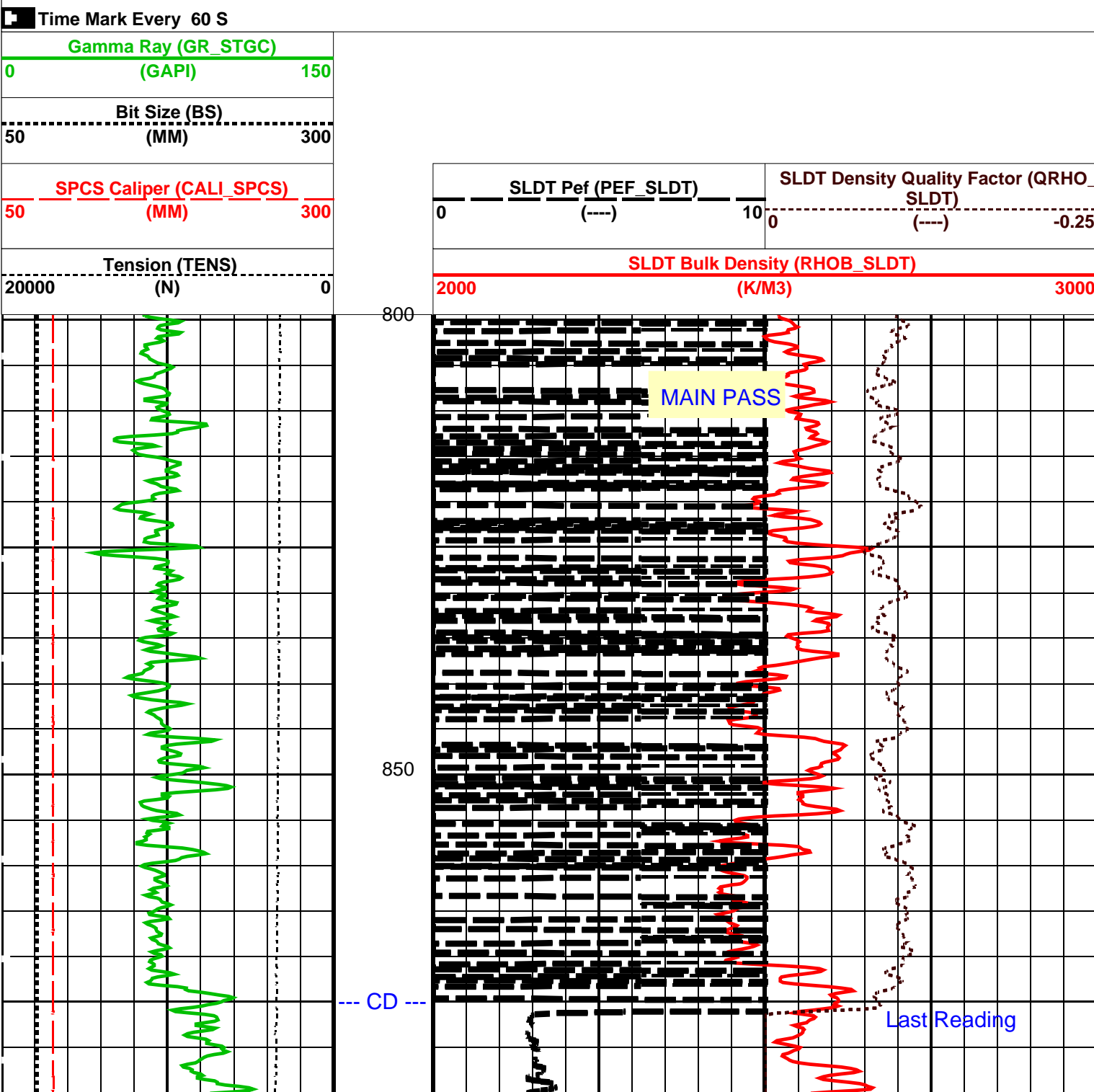
0.14

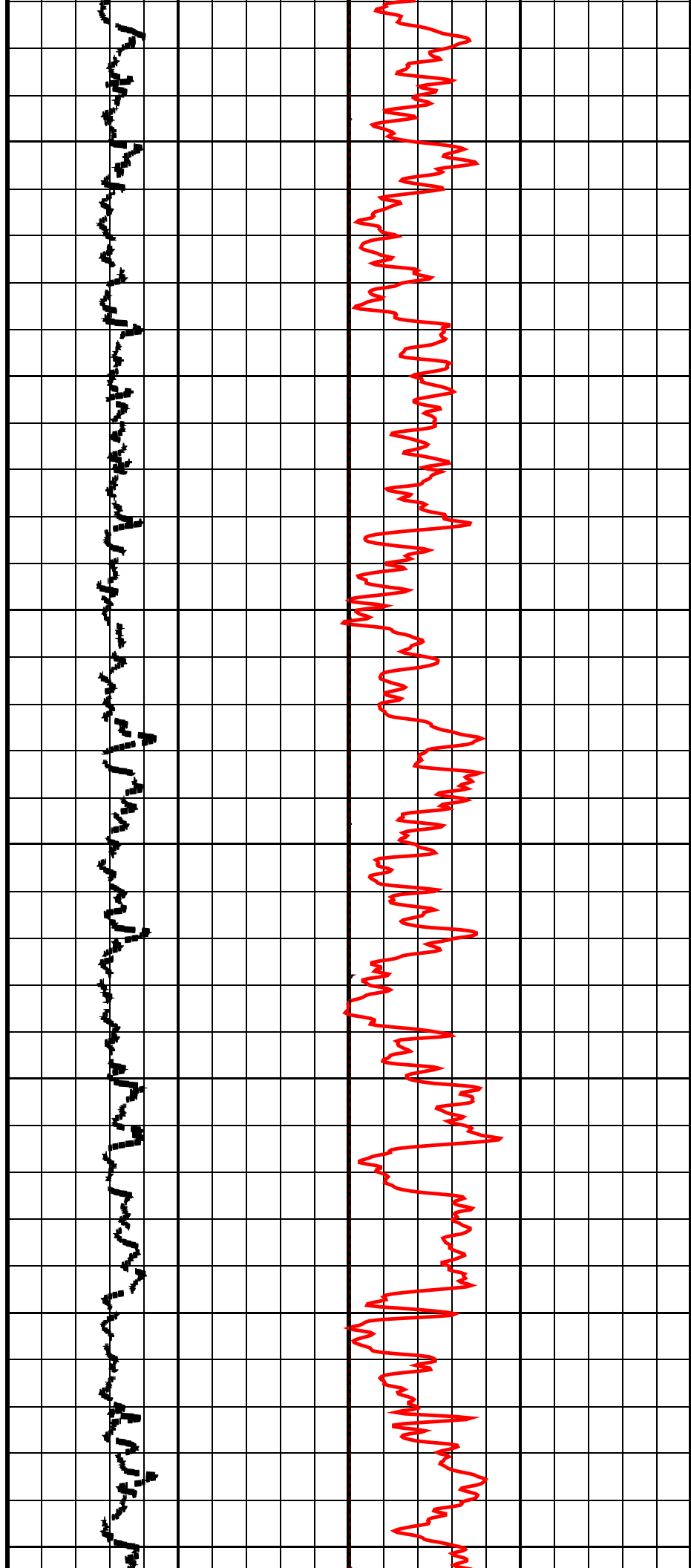
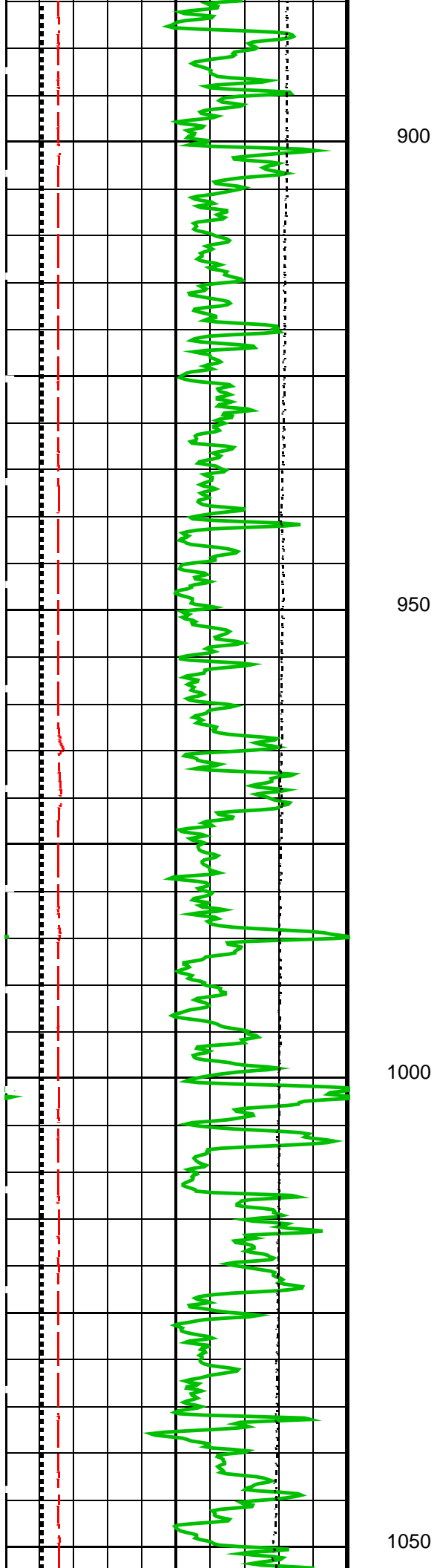
MAXIMUM STRING DIAMETER 64 MM
MEASUREMENTS RELATIVE TO TOOL ZERO
ALL LENGTHS IN METERS

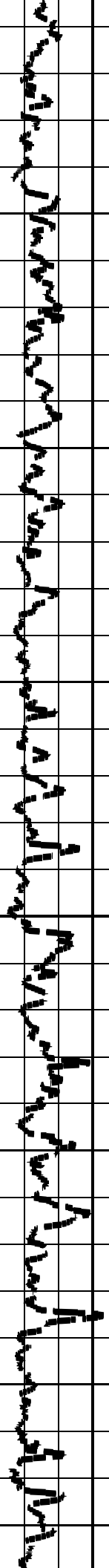
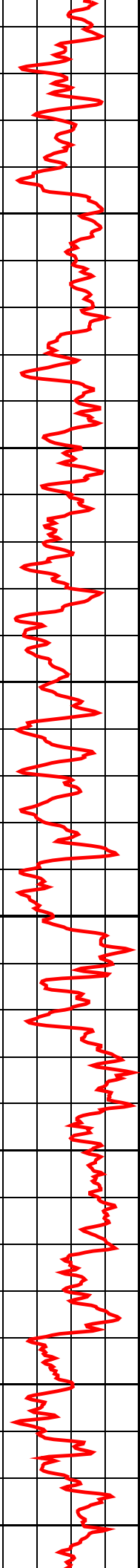
Input DLIS Files						
DEFAULT	SPCS .005	FN:4	PRODUCER	17-Jan-2001 18:49	1577.9 M	800.4 M
Output DLIS Files						
DEFAULT	SPCS .018	FN:17	PRODUCER	18-Jan-2001 23:03	1576.9 M	799.3 M

OP System Version: 9C0-413			
MCM			
SPCS-B	unofficial	SLDT-A	unofficial
STGC-B	unofficial		

PIP SUMMARY						
-------------	--	--	--	--	--	--



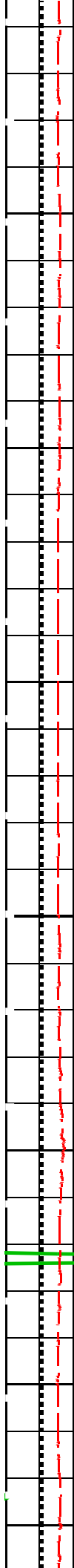
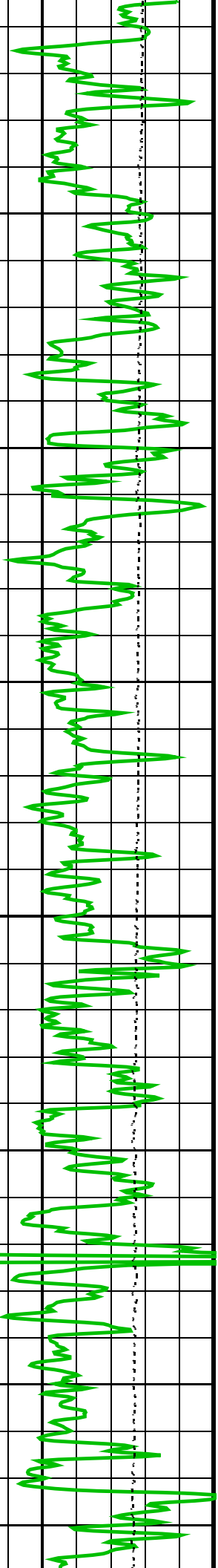


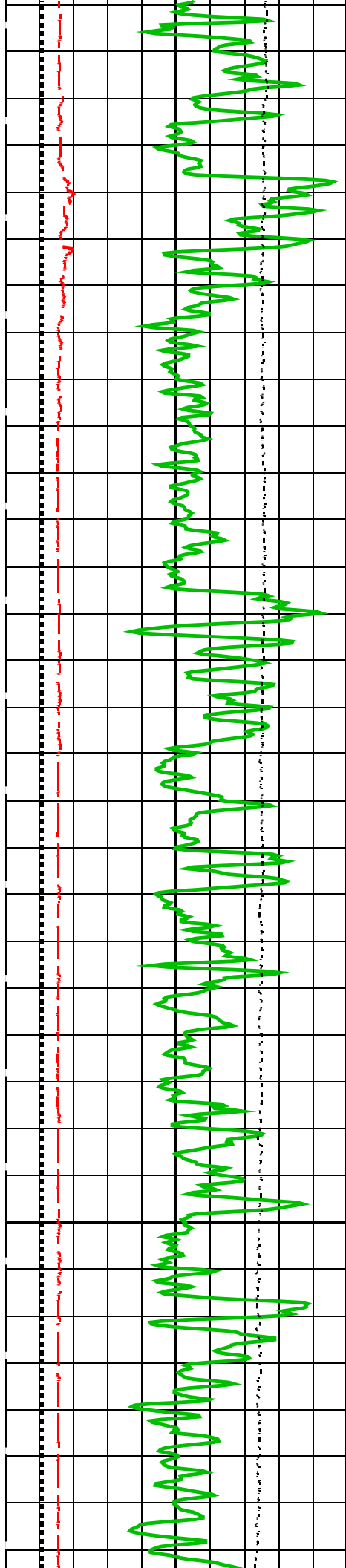


1100

1150

1200

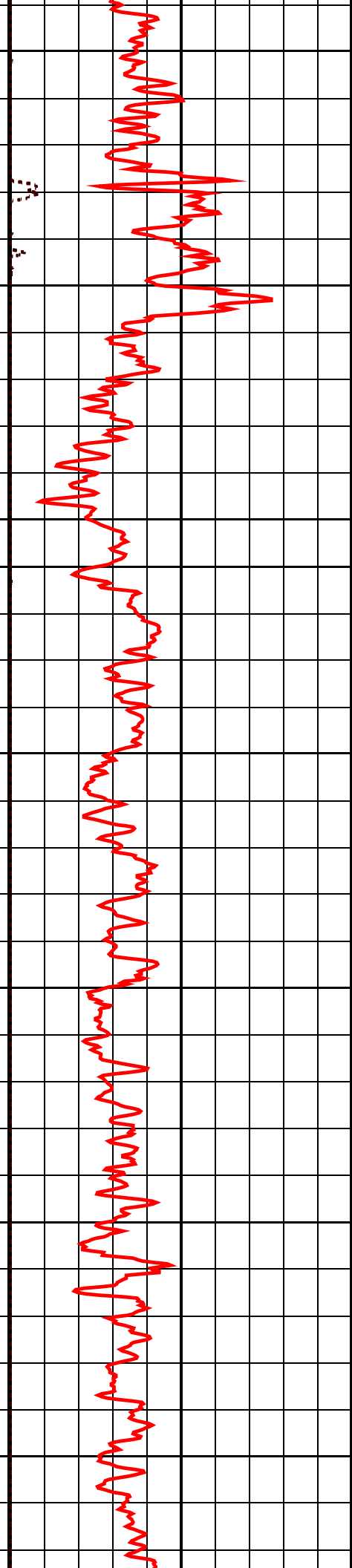
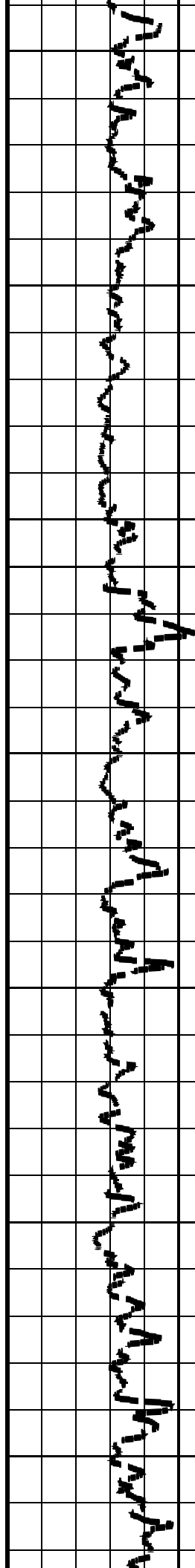


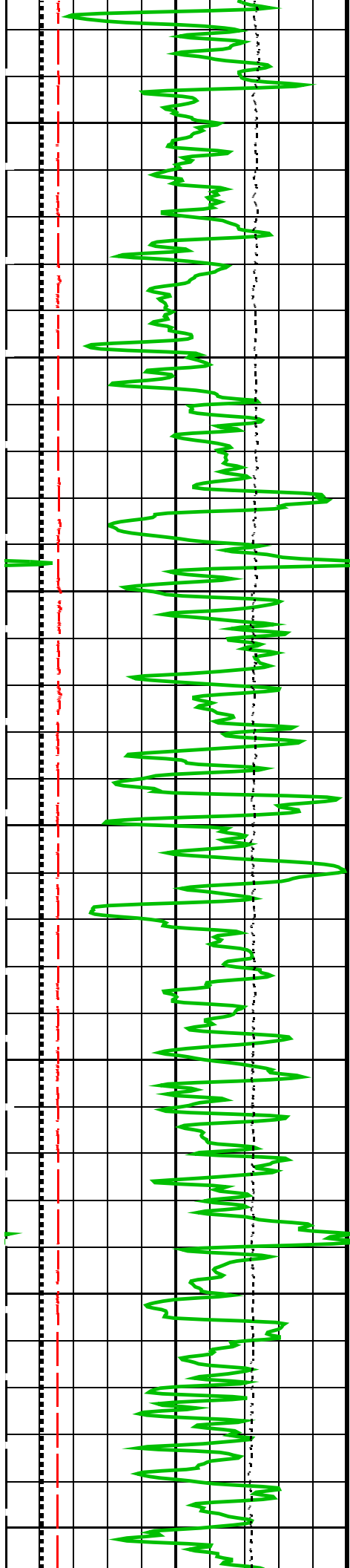


1250

1300

1350



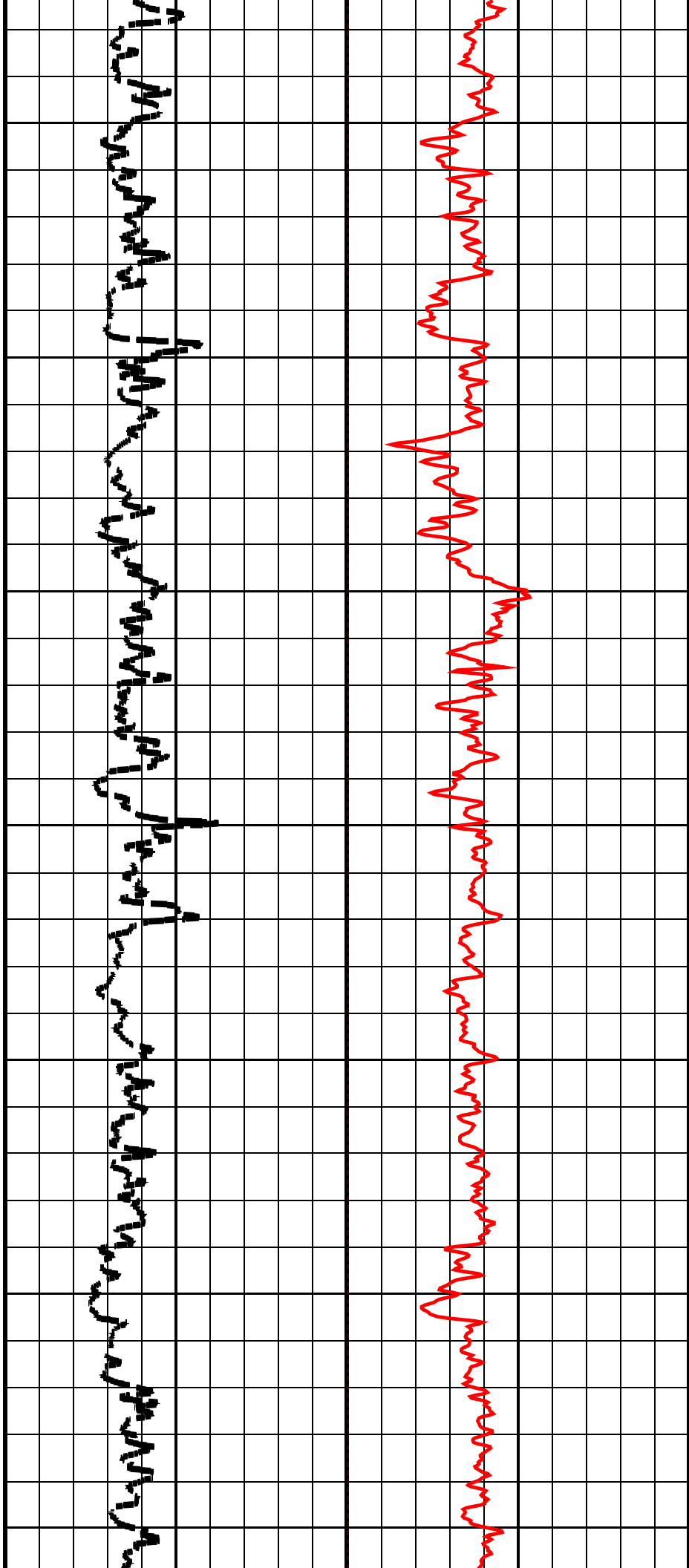


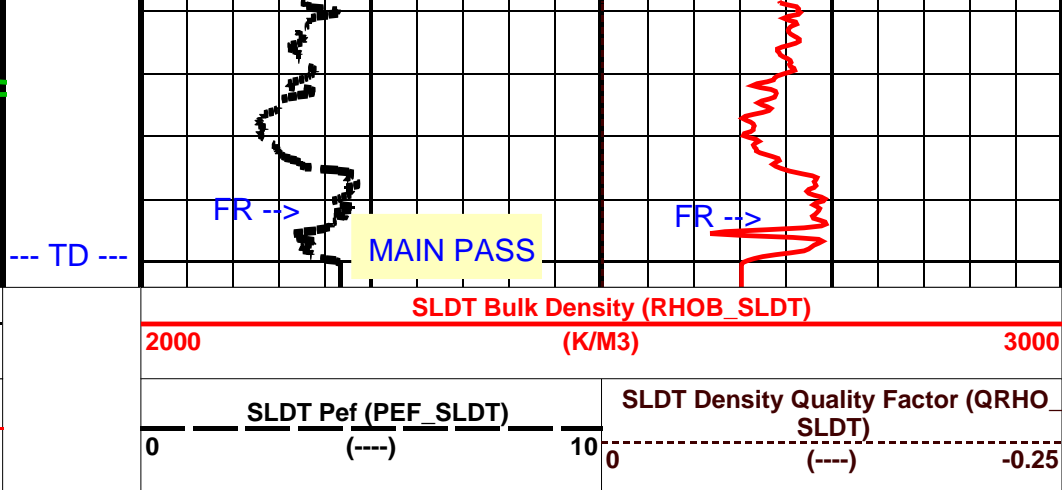
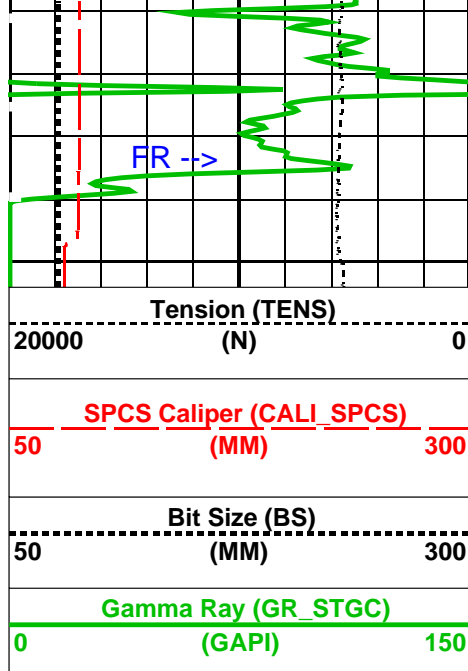
1400

1450

1500

1550





PIP SUMMARY

 Time Mark Every 60 S

Parameters			
DLIS Name	Description	Value	
BHT	Bottom Hole Temperature (used in calculations)	44	DEGC
BS	Bit Size	75.770	MM
DFD	Drilling Fluid Density	1068.00	K/M3
DO	Depth Offset	-1.0	M
FVNA_SLDT	SLDT Firmware Version Number - Major	0	
FVNI_SLDT	SLDT Firmware Version Number - Minor	0	
GCSE	Generalized Caliper Selection	BS	
GGRD	Geothermal Gradient	0.018227	DC/M
GTSE	Generalized Temperature Selection	LINEAR_ESTIMATE	
MVNA_SLDT	SLDT MAXIS Version Number - Major	10	
MVNI_SLDT	SLDT MAXIS Version Number - Minor	2	
PP	Playback Processing	RECOMPUTE	
PVNA_SLDT	SLDT Log Processing Version Number - Major	4	
PVNI_SLDT	SLDT Log Processing Version Number - Minor	21	
SDHC	SLDT Density Hole Correction	CALI_SPCS	
SHT	Surface Hole Temperature	12	DEGC
STSO	SLDT Temperature Correction Source	TMPY_SLDT	
TD	Total Depth	1575	M

Format: DENS_S2 Vertical Scale: 1:600 Graphics File Created: 18-Jan-2001 23:03

OP System Version: 9C0-413			
MCM			
SPCS-B	unofficial	SLDT-A	unofficial
STGC-B	unofficial		

Input DLIS Files						
DEFAULT	SPCS .005	FN:4	PRODUCER	17-Jan-2001 18:49	1577.9 M	800.4 M
Output DLIS Files						
DEFAULT	SPCS .018	FN:17	PRODUCER	18-Jan-2001 23:03		

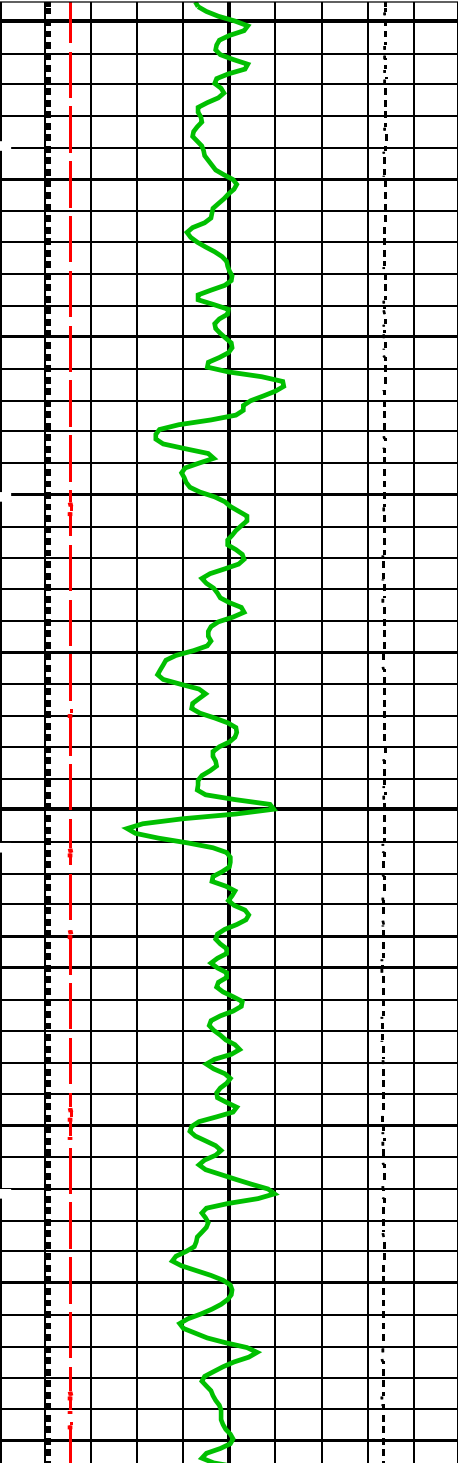
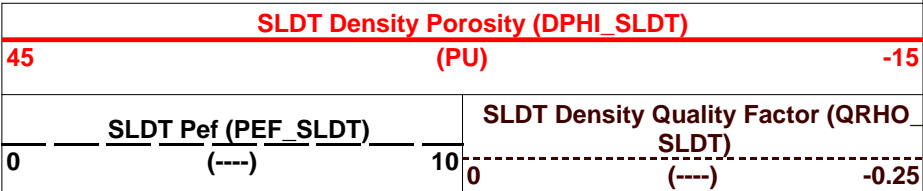
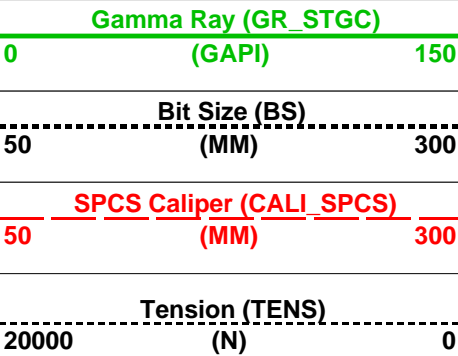
Input DLIS Files						
DEFAULT	SPCS .005	FN:4	PRODUCER	17-Jan-2001 18:49	1577.9 M	800.4 M
Output DLIS Files						
DEFAULT	SPCS .018	FN:17	PRODUCER	18-Jan-2001 23:03	1576.9 M	799.3 M

OP System Version: 9C0-413
MCM

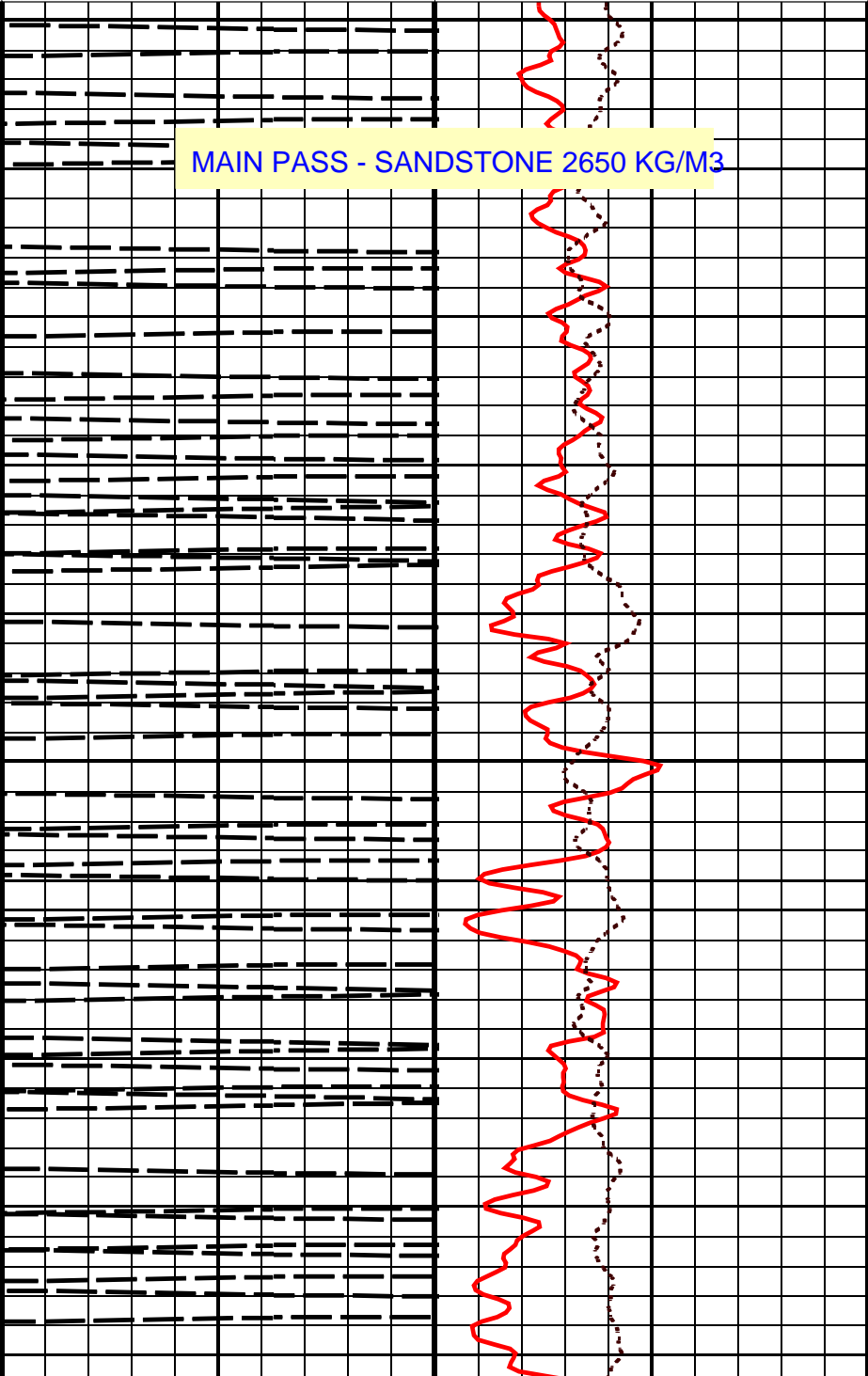
SPCS-B unofficial SLDT-A unofficial
STGC-B unofficial

PIP SUMMARY

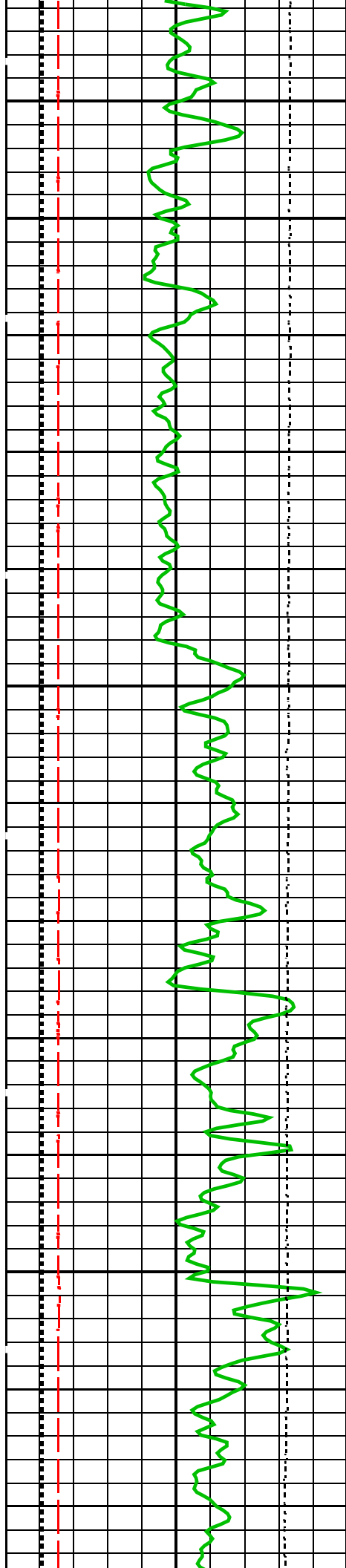
Time Mark Every 60 S



800



825

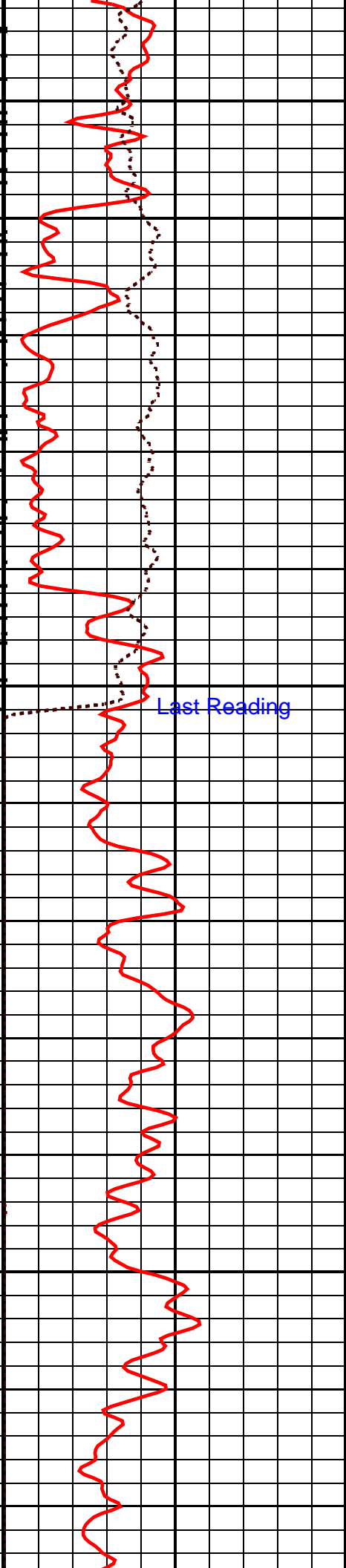
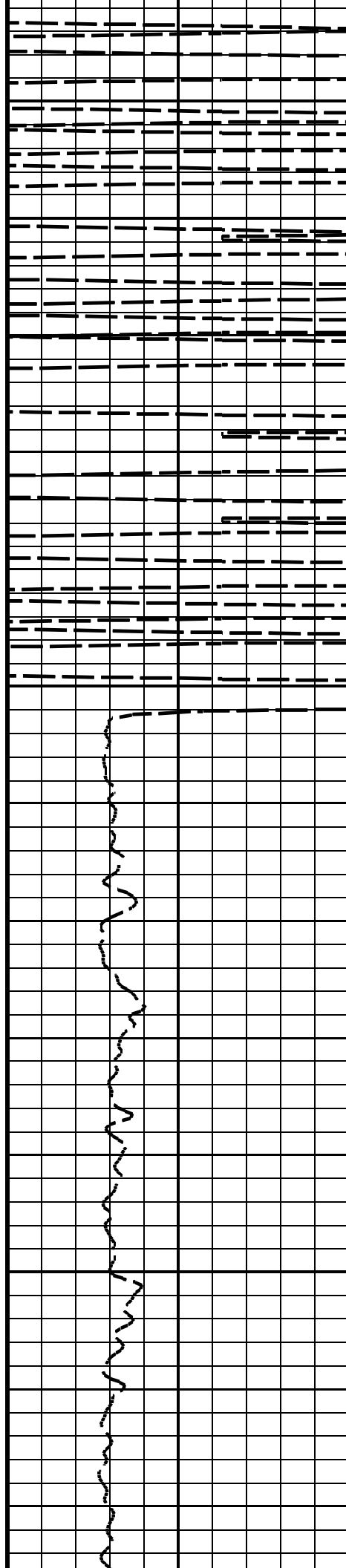


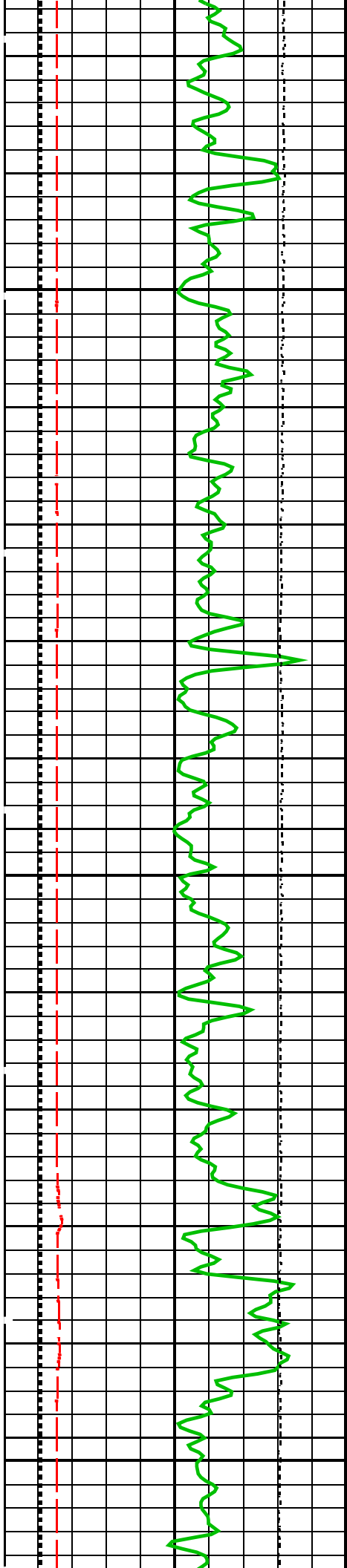
850

CD

875

900

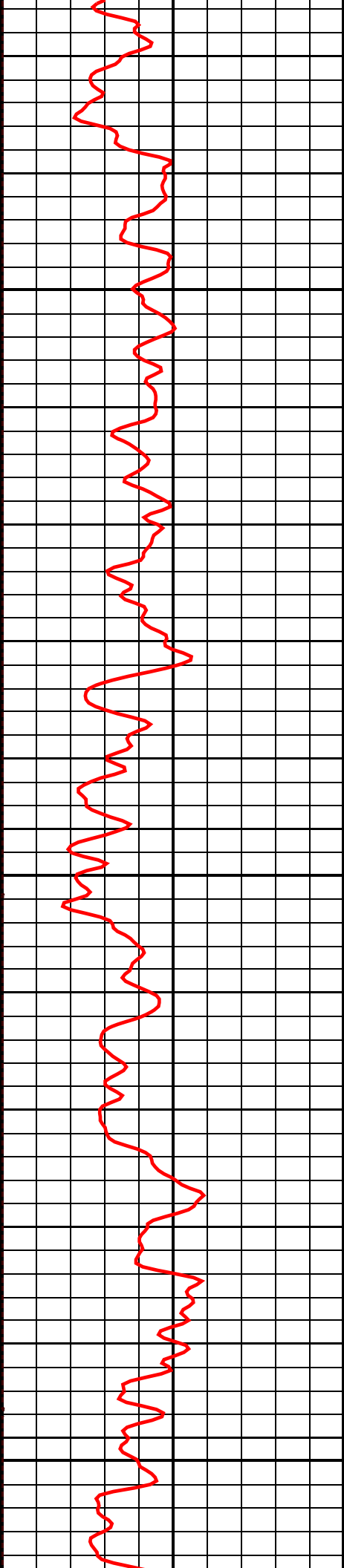
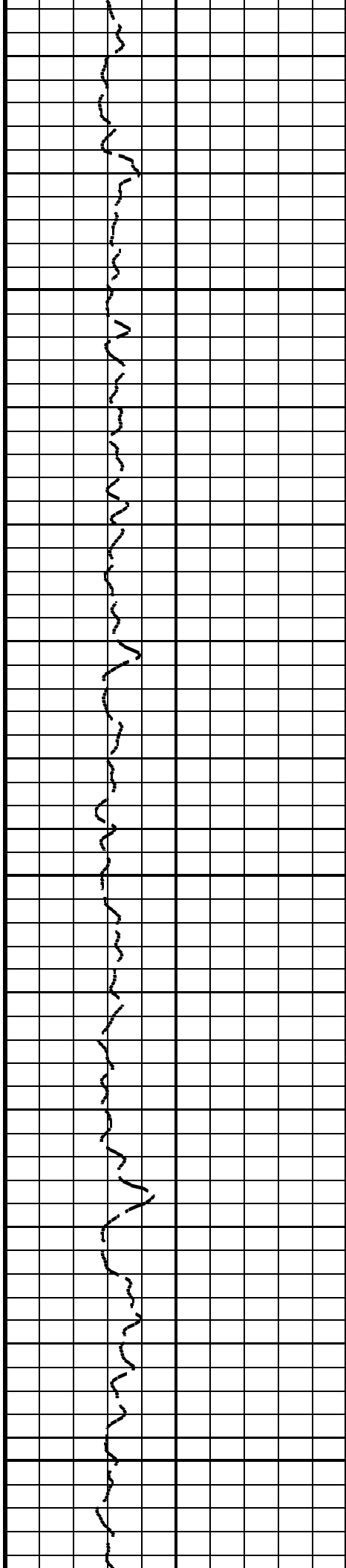


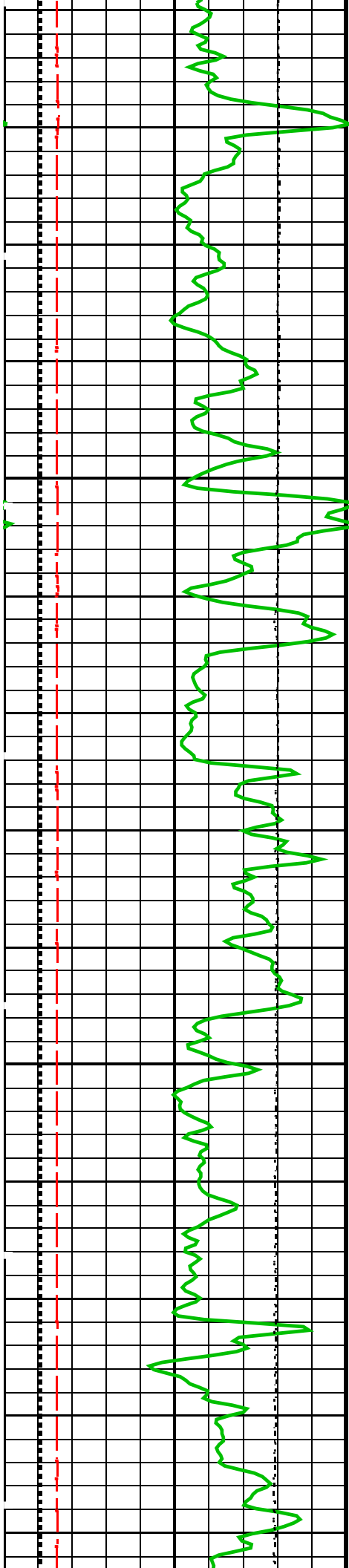


925

950

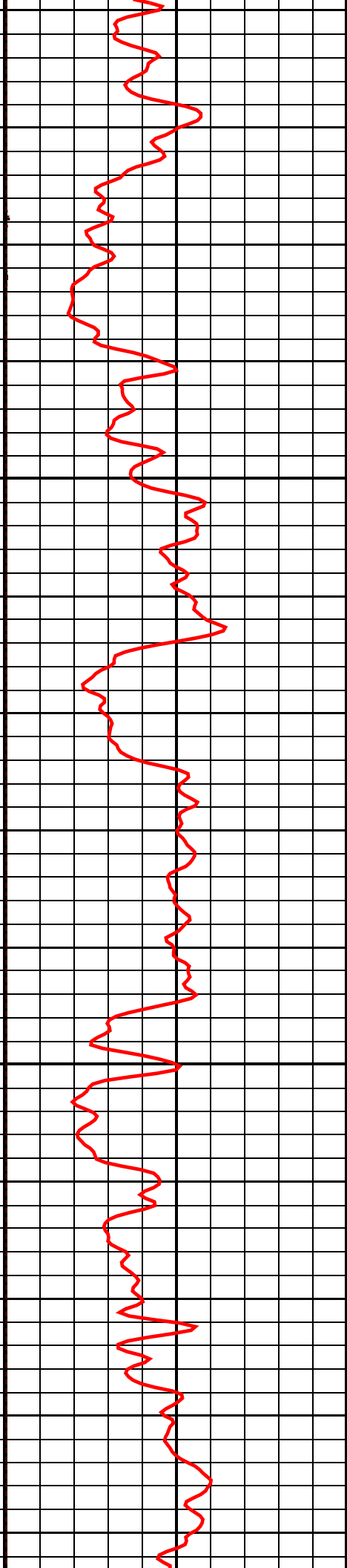
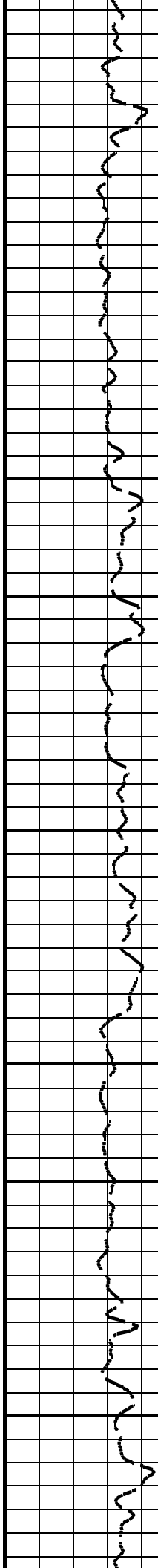
975

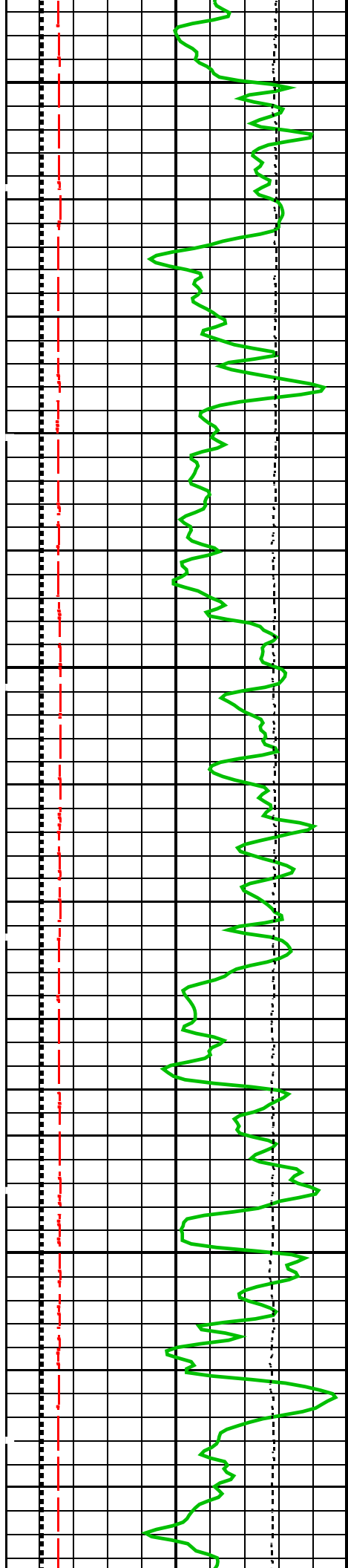




1000

1025

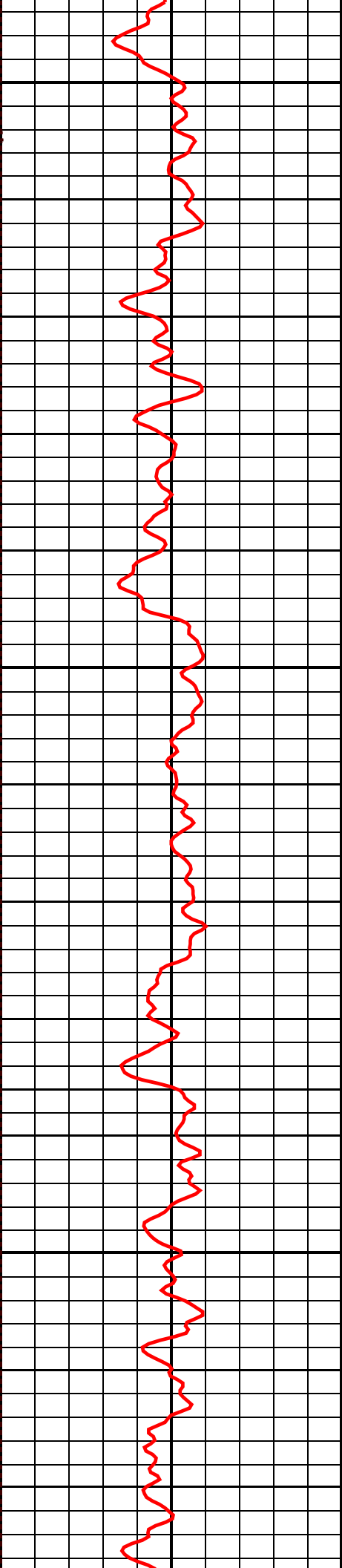
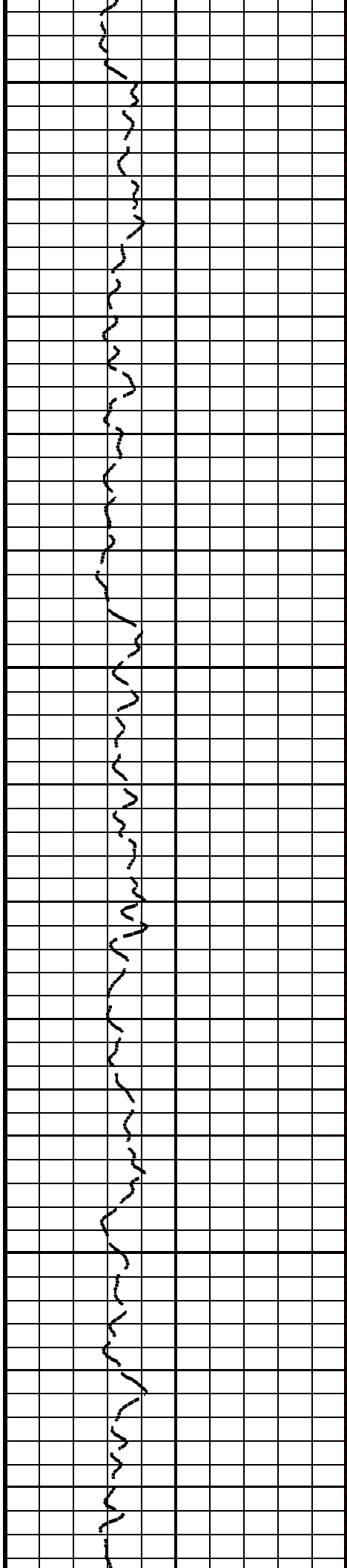


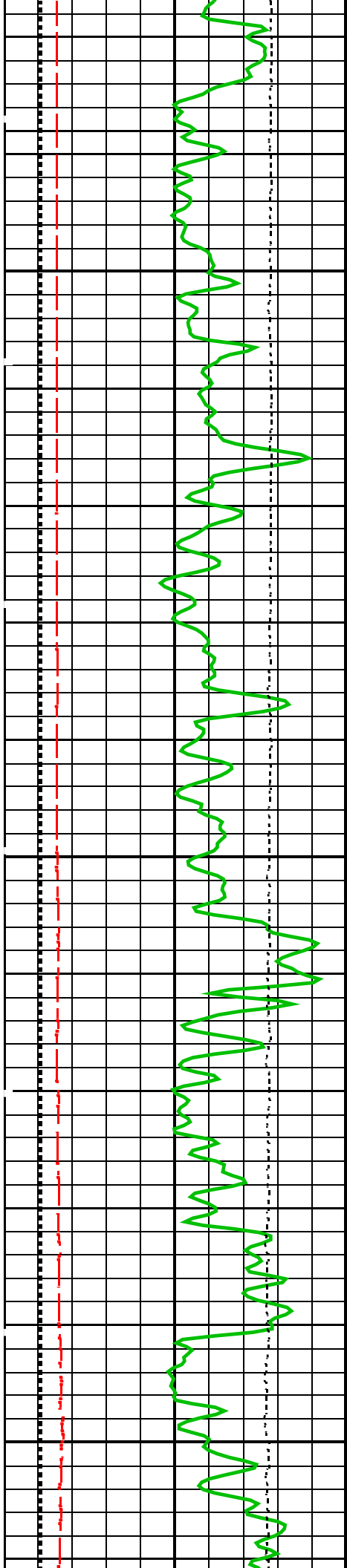


1050

1075

1100

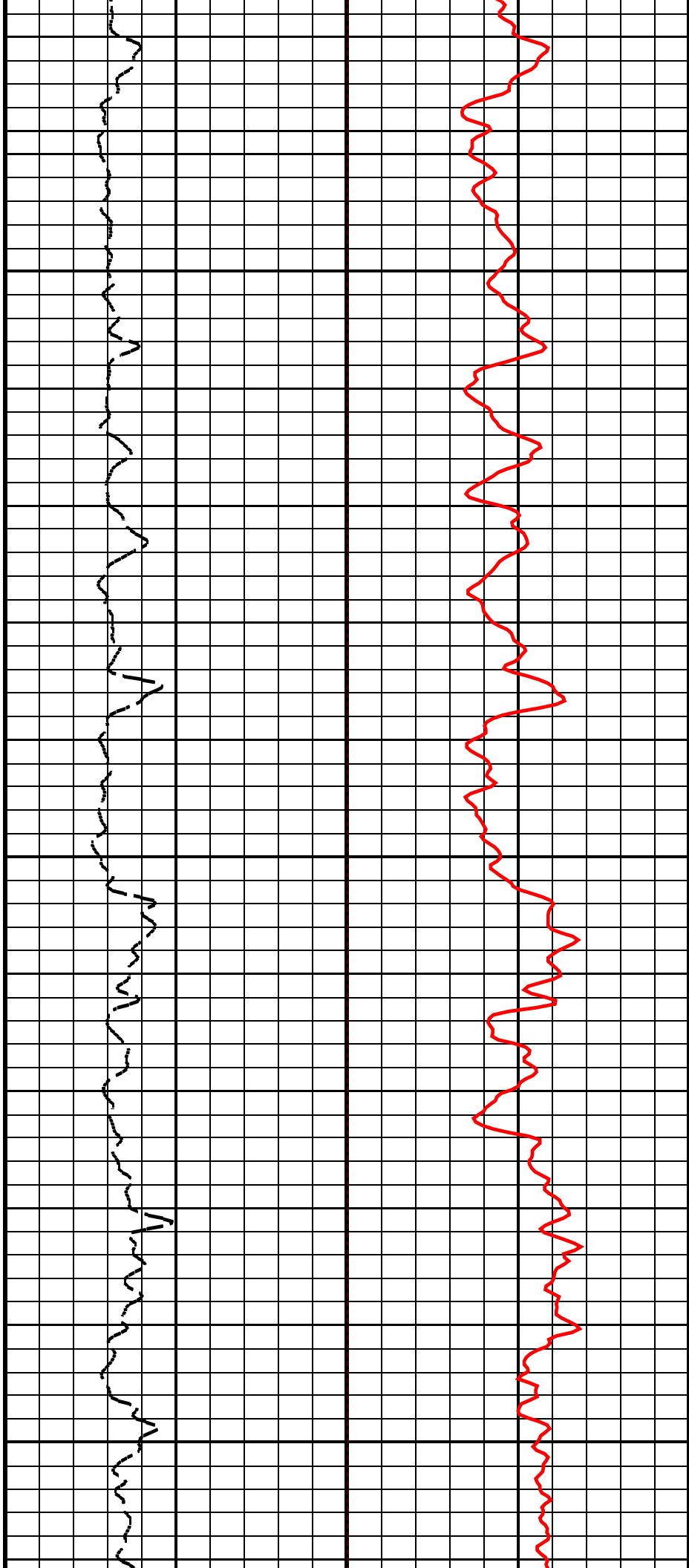


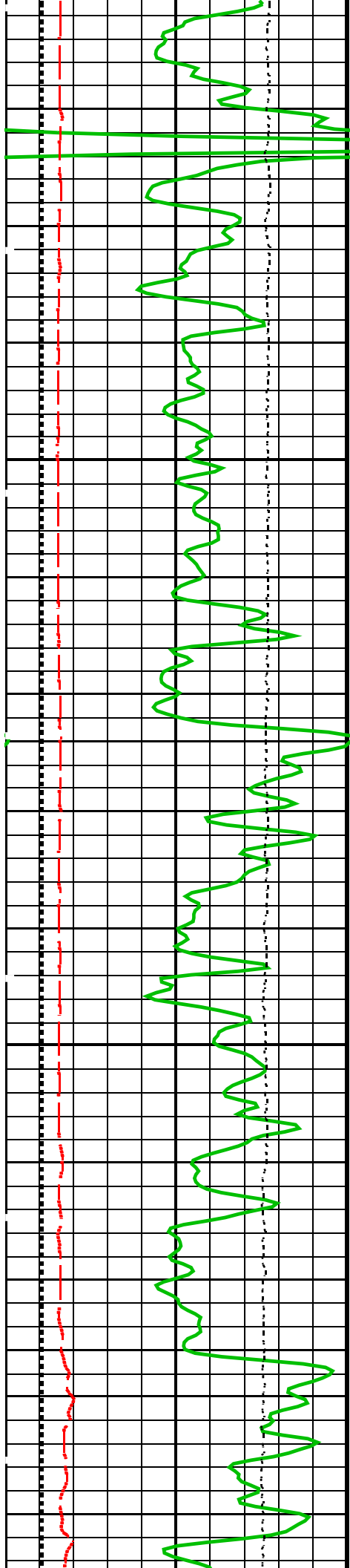


1125

1150

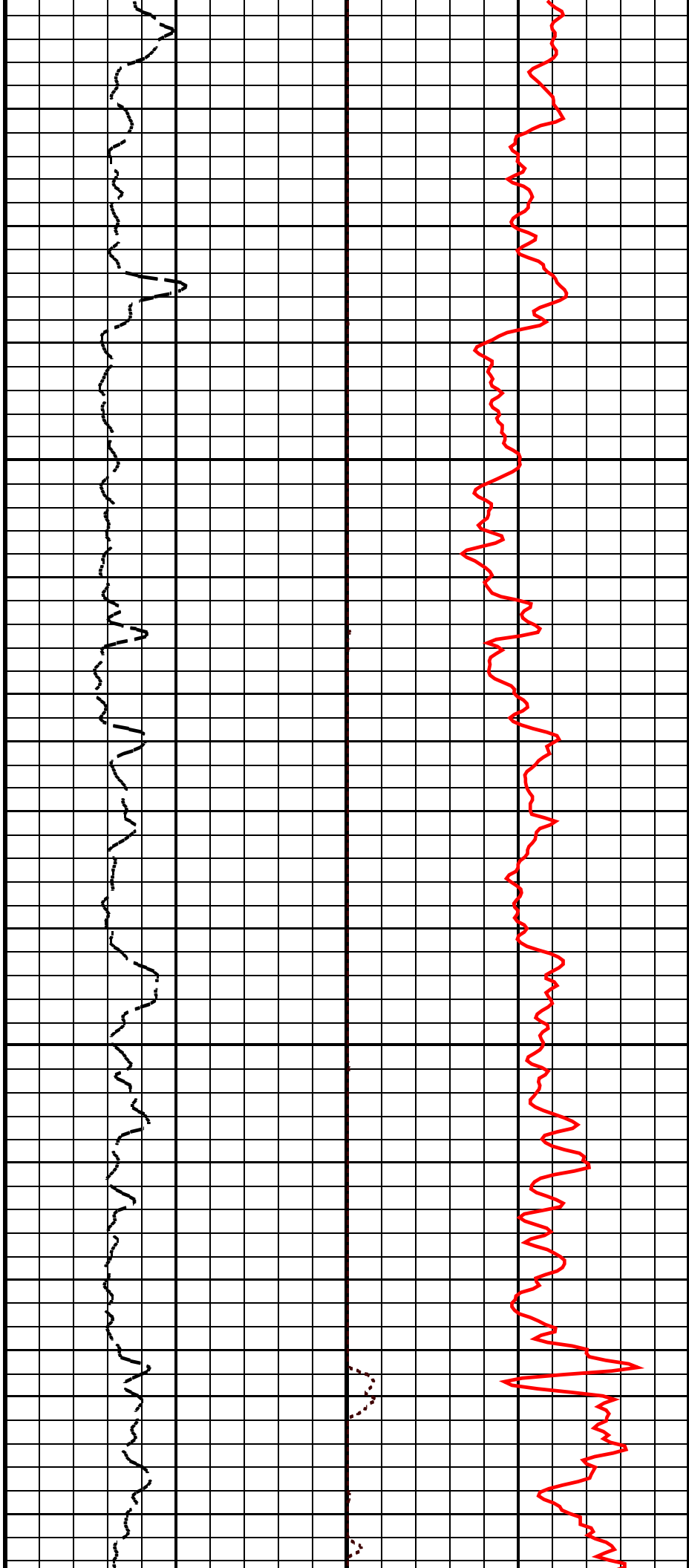
1175

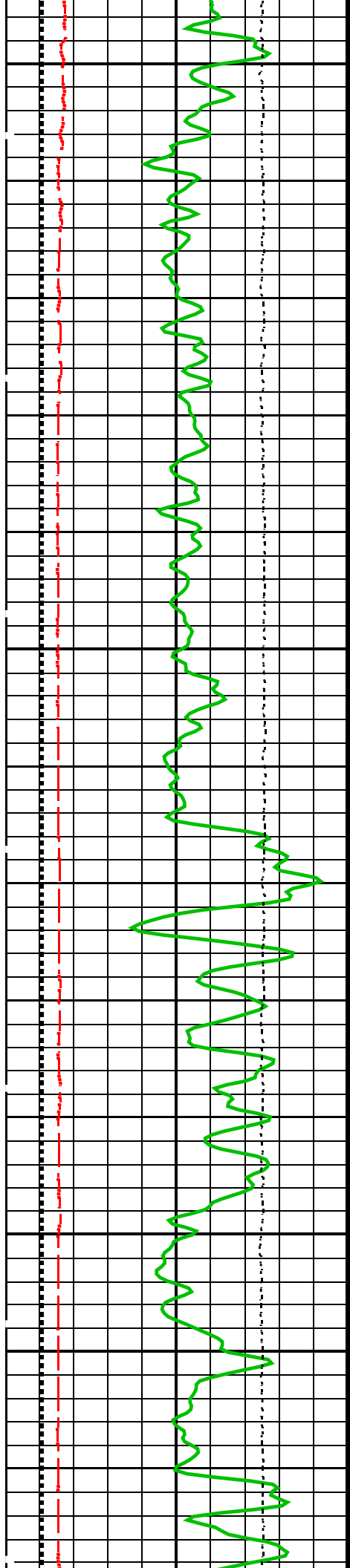




1200

1225



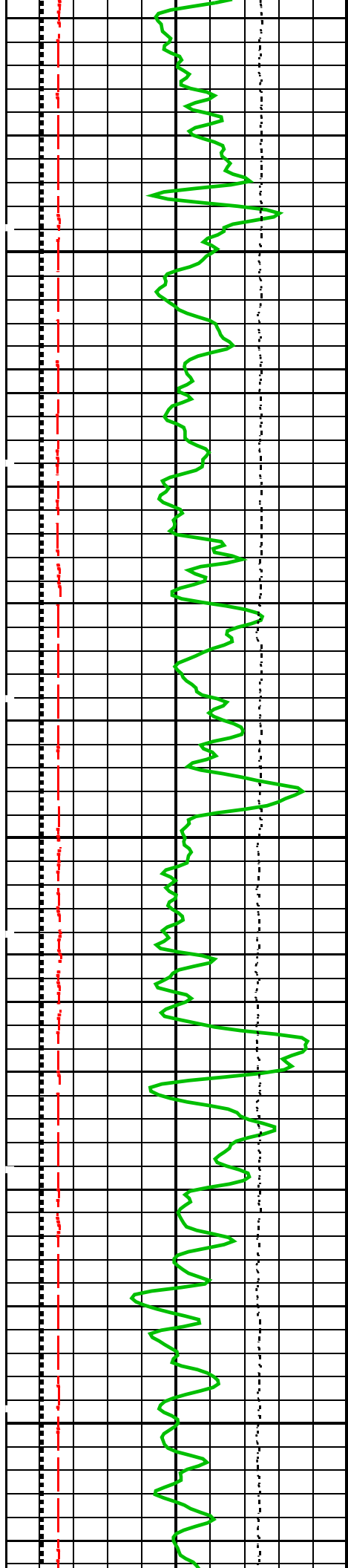


1250

1275

1300

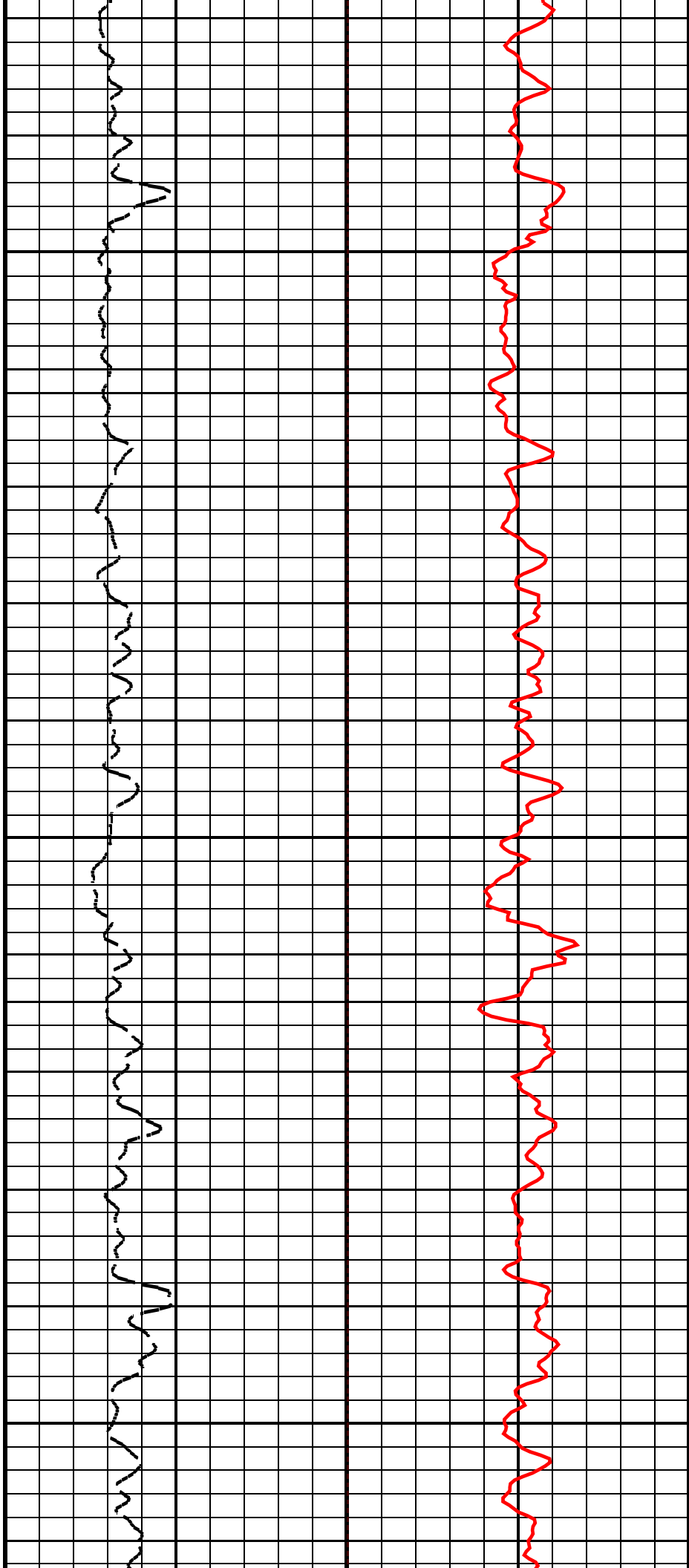


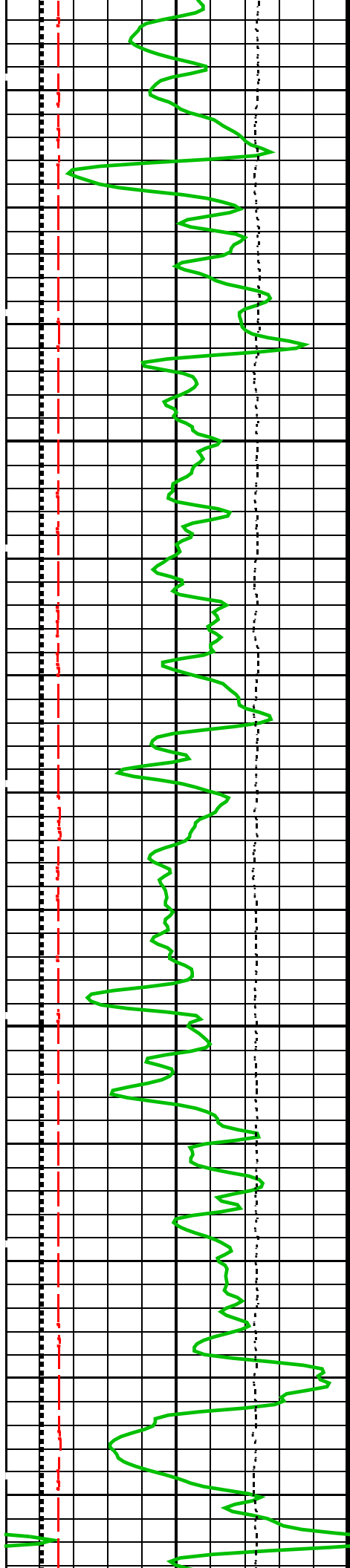


1325

1350

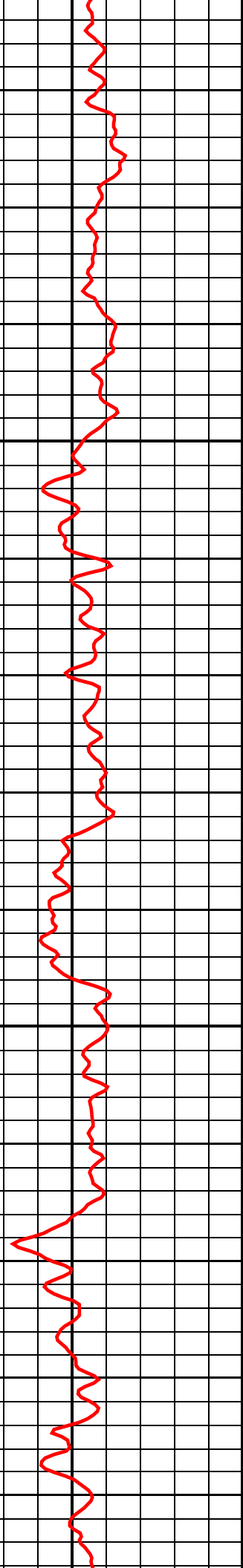
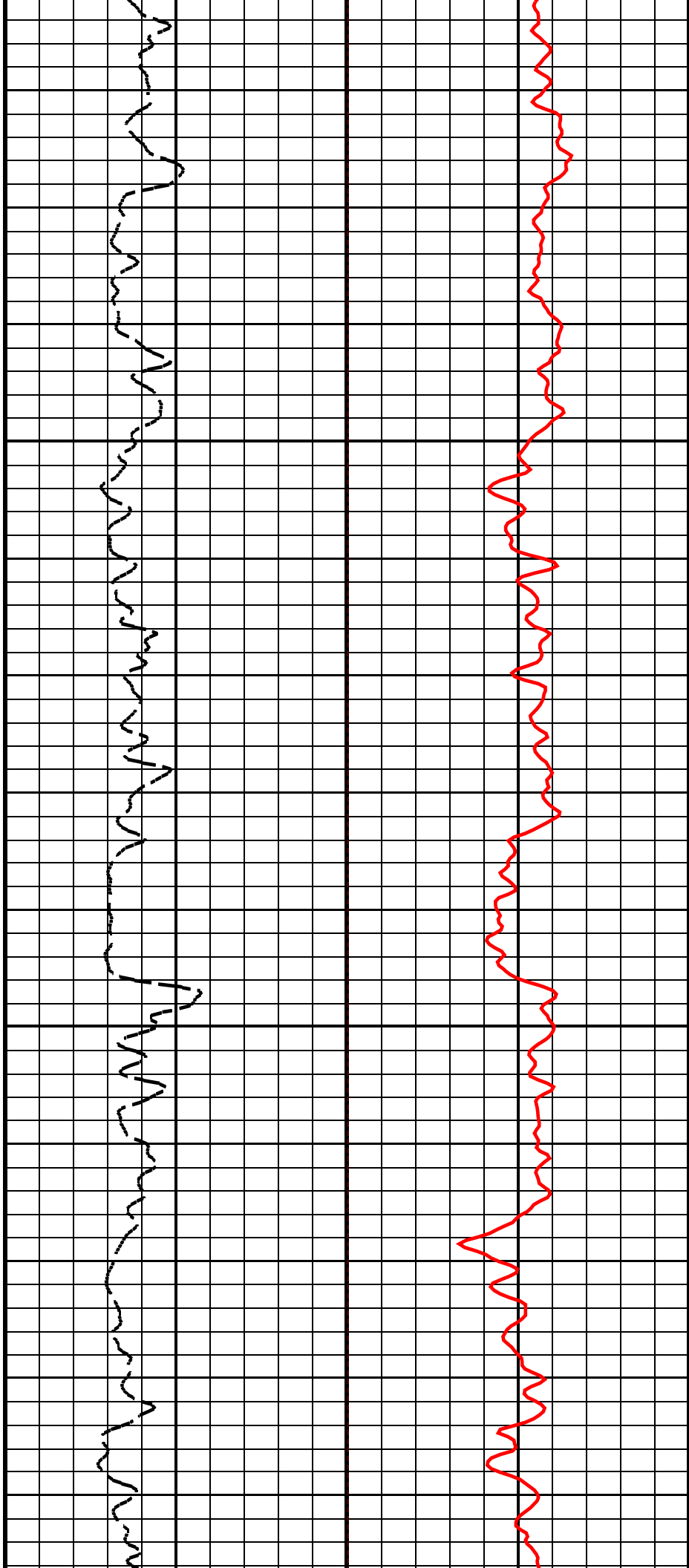
1375

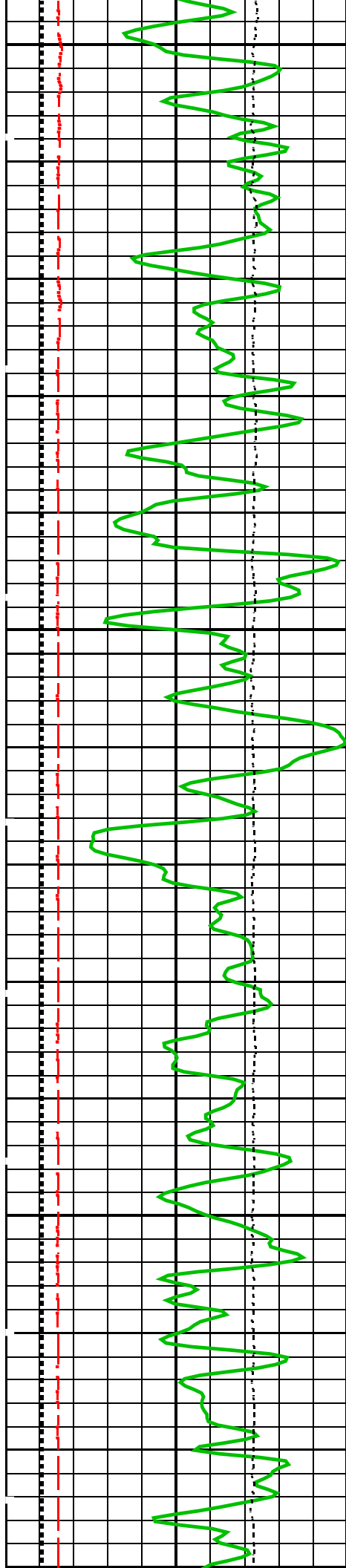




1400

1425

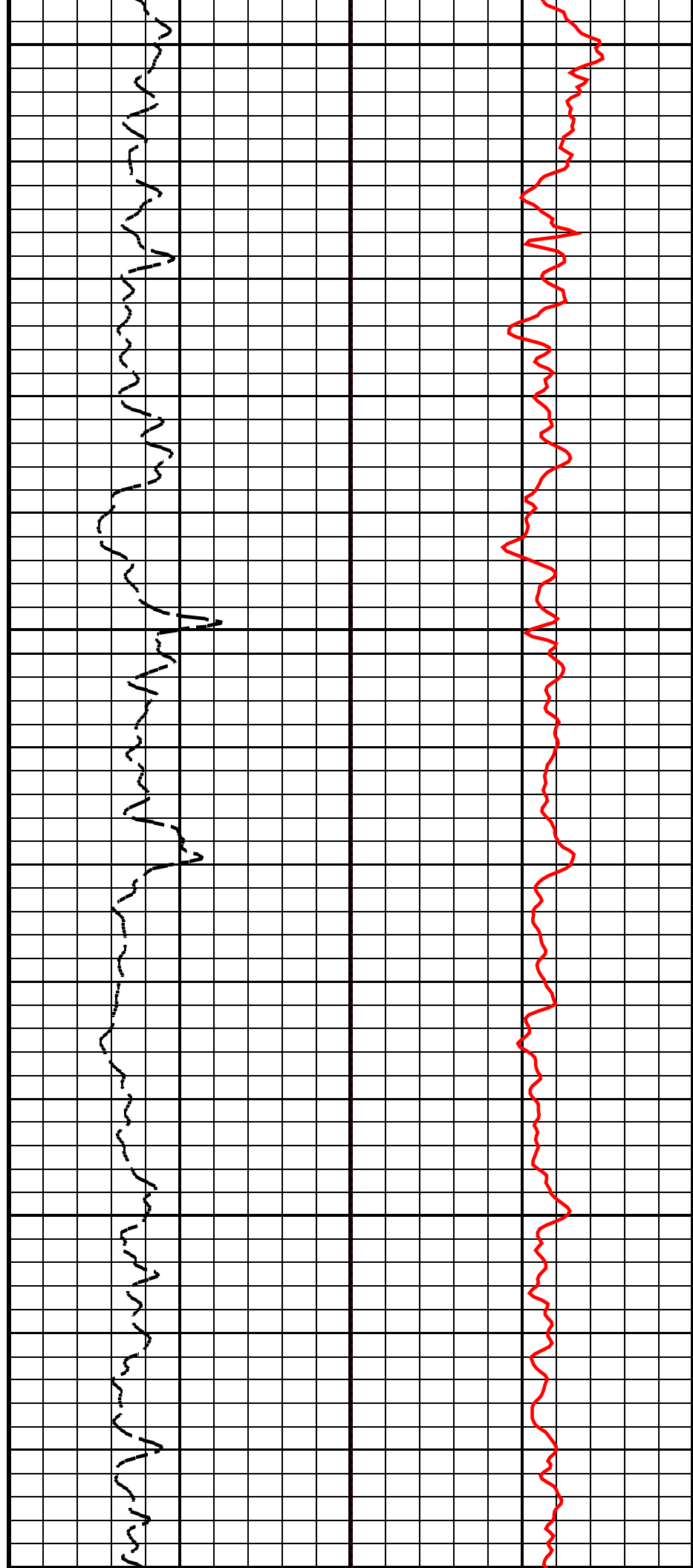


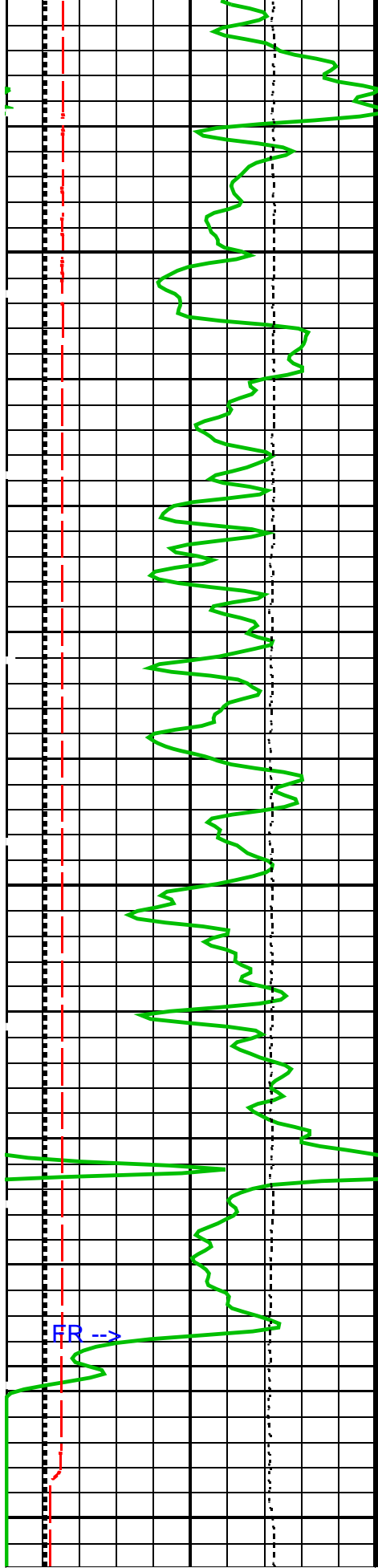


1450

1475

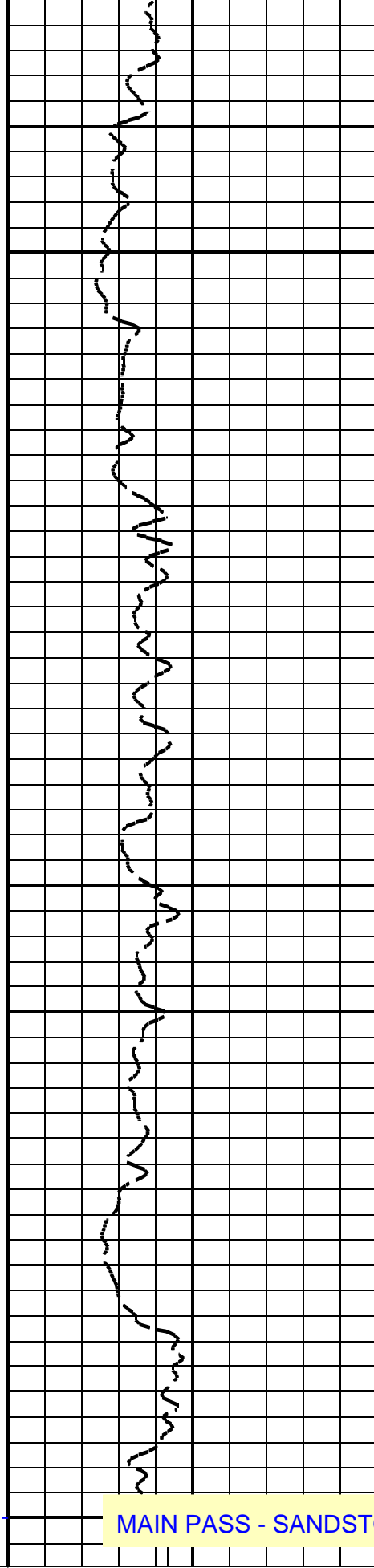
1500





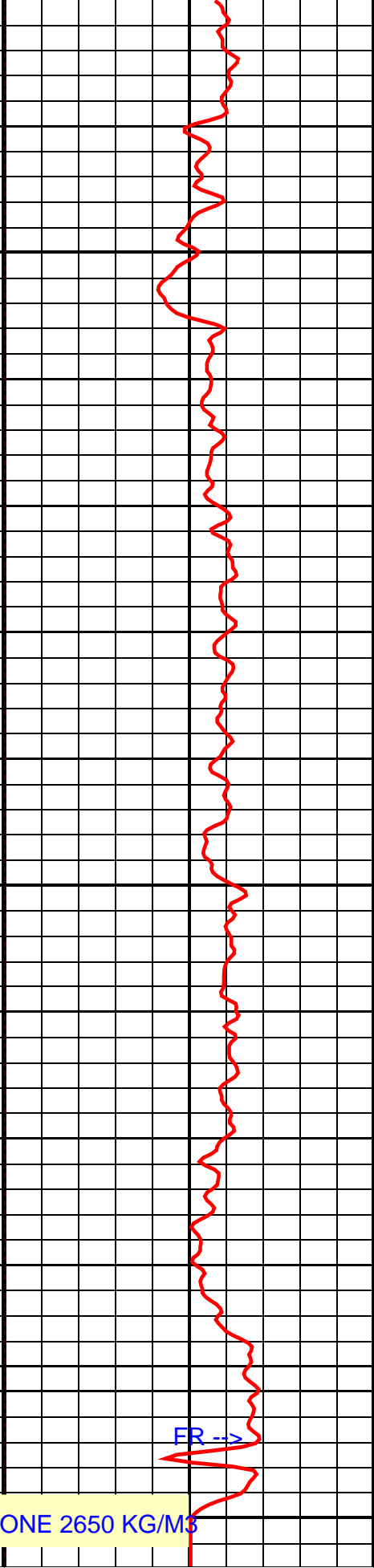
Tension (TENS)
(N)

SPCS Caliper (CALI_SPCS)



SLDT Pef (PEF_SLDT)
(----

SLDT Density Porosity (DPHI_SLDT)

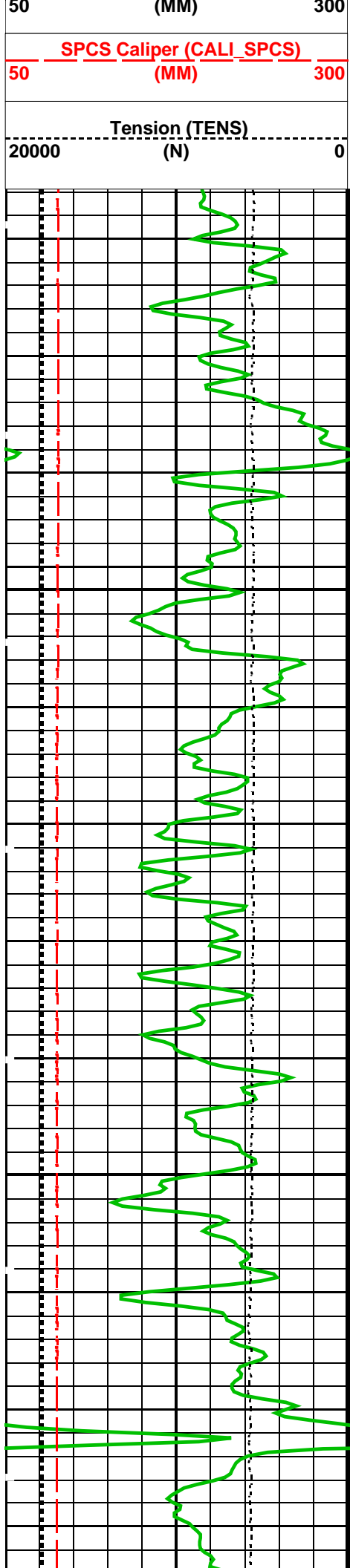


SLDT Density Quality Factor (QRHO_SLDT)
(----

SLDT Density Porosity (DPHI_SLDT)

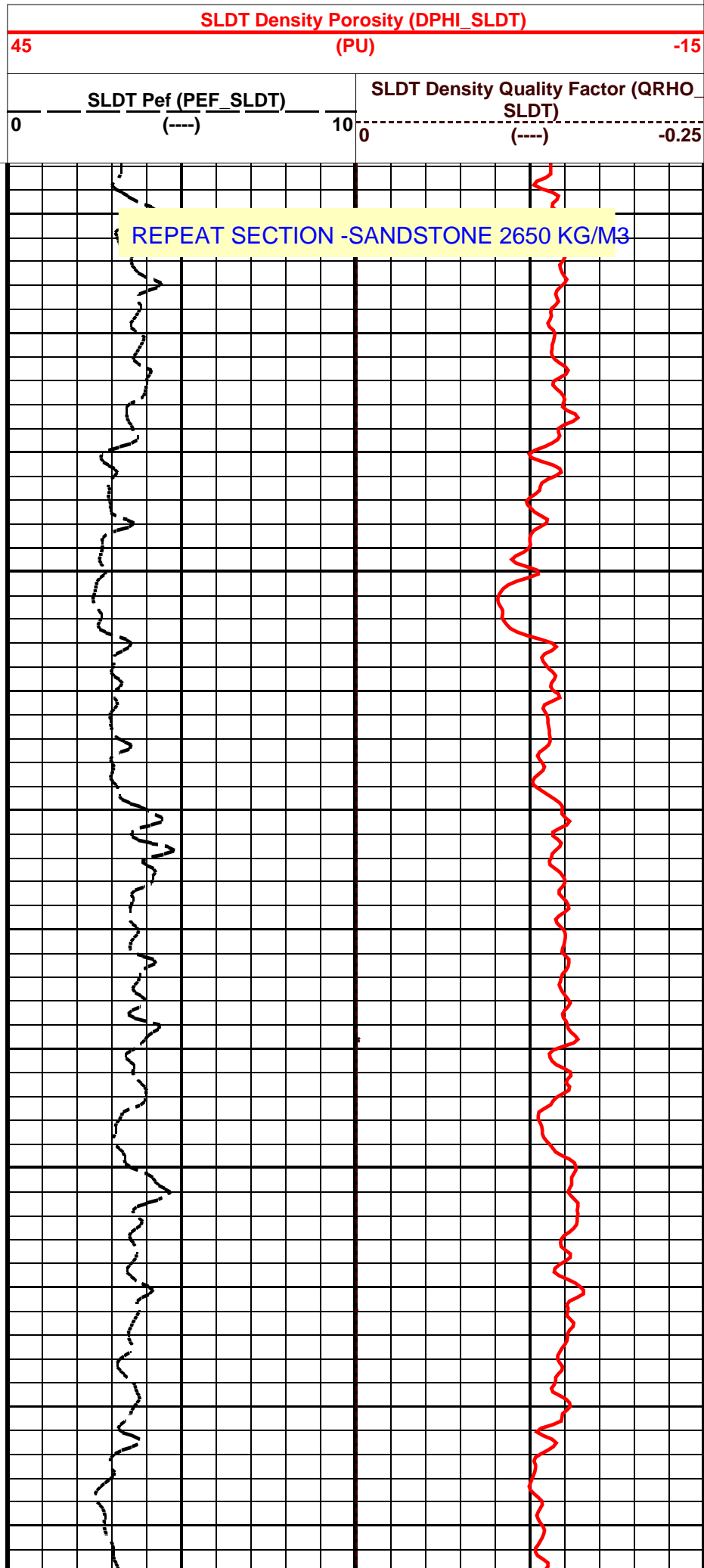
MAIN PASS - SANDSTONE 2650 KG/M3

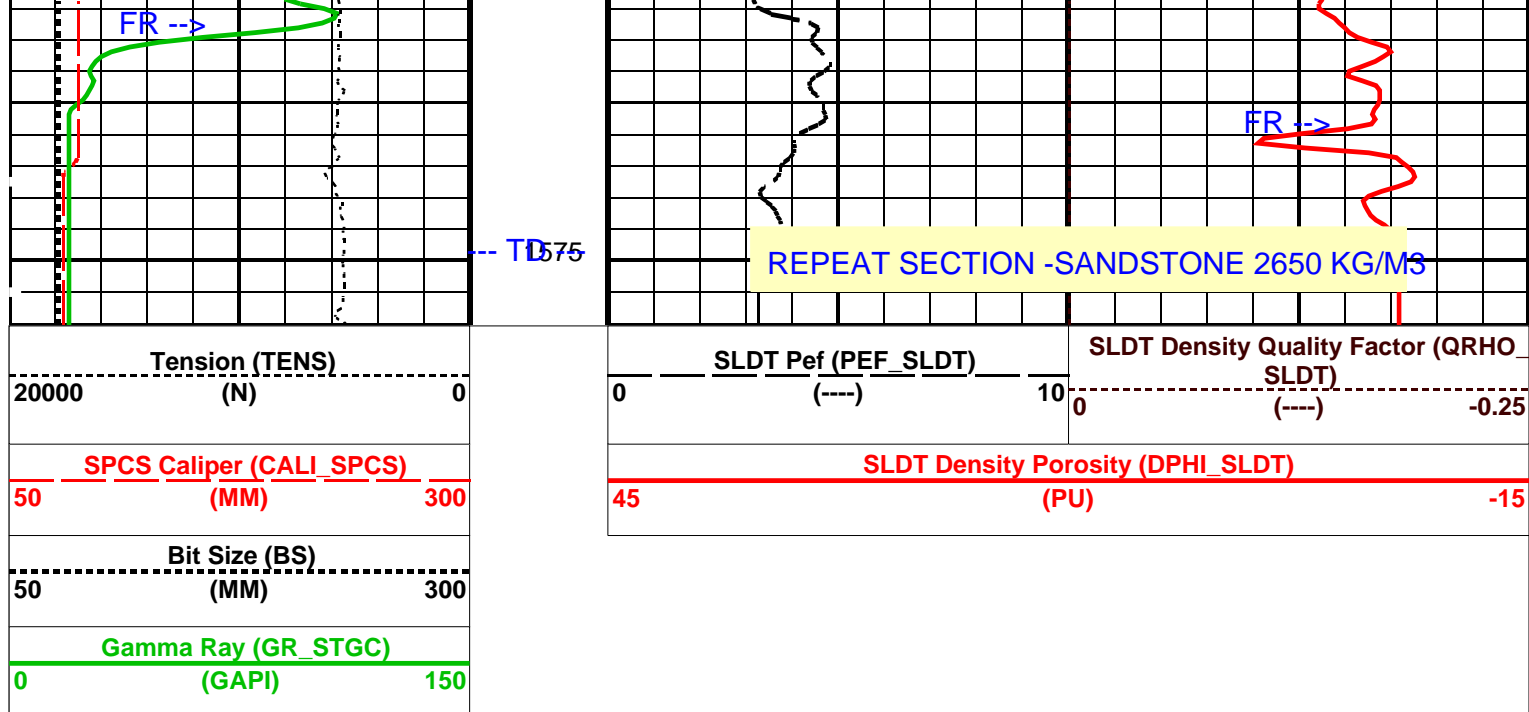
50	(MM)	300	45	(PU)	-15
Bit Size (BS)					
50	(MM)	300			
Gamma Ray (GR_STGC)					
0	(GAPI)	150			
PIP SUMMARY					
Time Mark Every 60 S					
Parameters					
DLIS Name		Description		Value	
BHT		Bottom Hole Temperature (used in calculations)		44	DEGC
BS		Bit Size		75.770	MM
DFD		Drilling Fluid Density		1068.00	K/M3
DO		Depth Offset		-1.0	M
FD		Fluid Density		1000	K/M3
FVNA_SLDT		SLDT Firmware Version Number - Major		0	
FVNI_SLDT		SLDT Firmware Version Number - Minor		0	
GCSE		Generalized Caliper Selection		BS	
GGRD		Geothermal Gradient		0.018227	DC/M
GTSE		Generalized Temperature Selection		LINEAR_ESTIMATE	
MDEN		Matrix Density		2650	K/M3
MVNA_SLDT		SLDT MAXIS Version Number - Major		10	
MVNI_SLDT		SLDT MAXIS Version Number - Minor		2	
PP		Playback Processing		RECOMPUTE	
PVNA_SLDT		SLDT Log Processing Version Number - Major		4	
PVNI_SLDT		SLDT Log Processing Version Number - Minor		21	
SDHC		SLDT Density Hole Correction		CALI_SPCS	
SHT		Surface Hole Temperature		12	DEGC
STSO		SLDT Temperature Correction Source		TMPY_SLDT	
TD		Total Depth		1575	M
Format: PORO_S5		Vertical Scale: 1:240		Graphics File Created: 18-Jan-2001 23:03	
OP System Version: 9C0-413					
MCM					
SPCS-B	unofficial	SLDT-A		unofficial	
STGC-B	unofficial				
Input DLIS Files					
DEFAULT	SPCS .005	FN:4	PRODUCER	17-Jan-2001 18:49	1577.9 M 800.4 M
Output DLIS Files					
DEFAULT	SPCS .018	FN:17	PRODUCER	18-Jan-2001 23:03	
Input DLIS Files					
DEFAULT	SPCS .004	FN:3	PRODUCER	17-Jan-2001 18:24	1578.1 M 1508.9 M
Output DLIS Files					
DEFAULT	SPCS .019	FN:18	PRODUCER	18-Jan-2001 23:11	1577.0 M 1507.8 M
OP System Version: 9C0-413					
MCM					
SPCS-B	unofficial	SLDT-A		unofficial	
STGC-B	unofficial				
PIP SUMMARY					
Time Mark Every 60 S					
Gamma Ray (GR_STGC)					
0	(GAPI)	150			
Bit Size (BS)					



1525

1550





PIP SUMMARY

Time Mark Every 60 S

Parameters			
DLIS Name	Description	Value	
BHT	Bottom Hole Temperature (used in calculations)	44	DEGC
BS	Bit Size	75.770	MM
DFD	Drilling Fluid Density	1068.00	K/M3
DO	Depth Offset	-1.0	M
FD	Fluid Density	1000	K/M3
FVNA_SLDT	SLDT Firmware Version Number - Major	0	
FVNI_SLDT	SLDT Firmware Version Number - Minor	0	
GCSE	Generalized Caliper Selection	BS	
GGRD	Geothermal Gradient	0.018227	DC/M
GTSE	Generalized Temperature Selection	LINEAR_ESTIMATE	
MDEN	Matrix Density	2650	K/M3
MVNA_SLDT	SLDT MAXIS Version Number - Major	10	
MVNI_SLDT	SLDT MAXIS Version Number - Minor	2	
PP	Playback Processing	RECOMPUTE	
PVNA_SLDT	SLDT Log Processing Version Number - Major	4	
PVNI_SLDT	SLDT Log Processing Version Number - Minor	21	
SDHC	SLDT Density Hole Correction	CALI_SPCS	
SHT	Surface Hole Temperature	12	DEGC
STSO	SLDT Temperature Correction Source	TMPY_SLDT	
TD	Total Depth	1575	M

Format: PORO_S5 Vertical Scale: 1:240 Graphics File Created: 18-Jan-2001 23:11

OP System Version: 9C0-413			
MCM			
SPCS-B	unofficial	SLDT-A	unofficial
STGC-B	unofficial		

Input DLIS Files						
DEFAULT	SPCS .004	FN:3	PRODUCER	17-Jan-2001 18:24	1578.1 M	1508.9 M
Output DLIS Files						
DEFAULT	SPCS .019	FN:18	PRODUCER	18-Jan-2001 23:11		

Calibration and Check Summary									
Measurement	Nominal	Master	Before	After	Change	Limit	Units		

Measurement	Nominal	Master	Before	After	Change	Limit	Units
Slimhole Powered Caliper Sonde - B Wellsite Calibration - SPCS Caliper Calibration							
Before: Calibration not done							
SPCS Caliper Small Ring	63.50	N/A	N/A	N/A	N/A	N/A	MM
SPCS Caliper Medium Ring	101.6	N/A	102.7	N/A	N/A	N/A	MM
SPCS Caliper Large Ring	203.2	N/A	195.6	N/A	N/A	N/A	MM
SLIM Telemetry Gamma-ray Cartridge - B Wellsite Calibration - Detector Calibration							
Before: 17-JAN-2001 16:44							
Gamma Ray (Jig - Bkg)	144.9	N/A	144.9	N/A	N/A	13.17	GAPI
Gamma Ray (Calibrated)	155.1	N/A	155.1	N/A	N/A	15.00	GAPI

Slimhole Powered Caliper Sonde - B / Equipment Identification	
Primary Equipment:	
Auxiliary Equipment:	

Slimhole Litho-Density Tool / Equipment Identification	
Primary Equipment:	
SLDT Cartridge	SLDC - A 17
SLDT Source	GSR - Z 1850
Auxiliary Equipment:	
SLDT Housing	SLDH - A 18

Slimhole Litho-Density Tool Wellsite Calibration											
SS Background Measurement											
Phase	SS Wind 1 Background CPS		Value	Phase	SS Wind 2 Background CPS		Value	Phase	SS Wind 3 Background CPS		Value
Master			1028	Master			1388	Master			1199
Before			1025	Before			1386	Before			1194
800.0 1150 1600				1050 1500 2000				900.0 1300 1800			
(Minimum) (Nominal) (Maximum)				(Minimum) (Nominal) (Maximum)				(Minimum) (Nominal) (Maximum)			
Phase	SS Wind 4 Background CPS		Value	Phase	SS Wind 5 Background CPS		Value	Phase	SS Wind 6 Background CPS		Value
Master			910.9	Master			1081	Master			638.4
Before			910.1	Before			1080	Before			641.8
700.0 1050 1400				850.0 1250 1600				450.0 650.0 1000			
(Minimum) (Nominal) (Maximum)				(Minimum) (Nominal) (Maximum)				(Minimum) (Nominal) (Maximum)			
Master: 17-JAN-2001 16:38				Before: 17-JAN-2001 16:42							

Slimhole Litho-Density Tool Wellsite Calibration													
MS Background Measurment													
Phase	MS Wind 1 Background CPS		Value	Phase	MS Wind 2 Background CPS		Value	Phase	MS Wind 3 Background CPS		Value		
Master			440.9	Master			608.2	Master			701.1		
Before			436.5	Before			601.4	Before			694.1		
250.0 (Minimum)			490.0 (Nominal)	650.0 (Maximum)	400.0 (Minimum)			670.0 (Nominal)	900.0 (Maximum)	400.0 (Minimum)		750.0 (Nominal)	1000 (Maximum)
Phase	MS Wind 4 Background CPS		Value	Phase	MS Wind 5 Background CPS		Value	Phase	MS Wind 6 Background CPS		Value		
Master			1148	Master			1504	Master			873.8		
Before			1148	Before			1491	Before			870.0		
700.0 (Minimum)			1230 (Nominal)	1600 (Maximum)	900.0 (Minimum)			1625 (Nominal)	2200 (Maximum)	550.0 (Minimum)		950.0 (Nominal)	1300 (Maximum)
Master: 17-JAN-2001 16:38				Before: 17-JAN-2001 16:42									

Slimhole Litho-Density Tool Wellsite Calibration														
LS Background Measurment														
Phase	LS Wind 1 Background CPS			Value	Phase	LS Wind 2 Background CPS			Value	Phase	LS Wind 3 Background CPS			Value
Master				262.2	Master				260.7	Master				314.6
Before				260.9	Before				256.3	Before				308.9
150.0275.0350.0					150.0275.0350.0					200.0350.0400.0				

130.0 (Minimum)275.0 (Nominal)330.0 (Maximum)			130.0 (Minimum)275.0 (Nominal)330.0 (Maximum)			200.0 (Minimum)350.0 (Nominal)400.0 (Maximum)					
Phase	LS Wind 4 Background CPS		Value	Phase	LS Wind 5 Background CPS		Value	Phase	LS Wind 6 Background CPS		Value
Master			516.9	Master			676.4	Master			367.1
Before			514.4	Before			672.7	Before			363.4
350.0 (Minimum)550.0 (Nominal)650.0 (Maximum)			450.0 (Minimum)700.0 (Nominal)800.0 (Maximum)			250.0 (Minimum)375.0 (Nominal)450.0 (Maximum)					
Master: 17-JAN-2001 16:38			Before: 17-JAN-2001 16:42								

Slimhole Litho-Density Tool Wellsite Calibration											
Cs Resolution - Background Measurement											
Phase	SS Cs Resolution Bkg %		Value	Phase	MS Cs Resolution Bkg %		Value	Phase	LS Cs Resolution Bkg %		Value
Master			13.00	Master			9.187	Master			8.796
Before			12.61	Before			9.165	Before			8.741
9.000 (Minimum)			12.00 (Nominal)	14.00 (Maximum)			7.500 (Minimum)			10.50 (Nominal)	12.50 (Maximum)
Master: 17-JAN-2001 16:38				Before: 17-JAN-2001 16:42							

Slimhole Litho-Density Tool Master Calibration																	
SS Bkgd Subtracted Window Countrates																	
Phase	SS Wind 1	Water Lo	PE BSub	CPS	Value	Phase	SS Wind 2	Water Lo	PE BSub	CPS	Value	Phase	SS Wind 3	Water Lo	PE BSub	CPS	Value
Master	<div><div></div></div>	<div><div></div></div>			43740	Master	<div><div></div></div>	<div><div></div></div>			37770	Master	<div><div></div></div>	<div><div></div></div>			26350
33500		49100		54450		27650		40900		45600		19100		28500		32000	
(Minimum)		(Nominal)		(Maximum)		(Minimum)		(Nominal)		(Maximum)		(Minimum)		(Nominal)		(Maximum)	
Phase	SS Wind 4	Water Lo	PE BSub	CPS	Value	Phase	SS Wind 5	Water Lo	PE BSub	CPS	Value	Phase	SS Wind 6	Water Lo	PE BSub	CPS	Value
Master	<div><div></div></div>	<div><div></div></div>			19380	Master	<div><div></div></div>	<div><div></div></div>			14880	Master	<div><div></div></div>	<div><div></div></div>			4833
14200		21200		23850		11550		16600		19850		3800		5500		7150	
(Minimum)		(Nominal)		(Maximum)		(Minimum)		(Nominal)		(Maximum)		(Minimum)		(Nominal)		(Maximum)	
Phase	SS Wind 1	Water Hi	PE BSub	CPS	Value	Phase	SS Wind 2	Water Hi	PE BSub	CPS	Value	Phase	SS Wind 3	Water Hi	PE BSub	CPS	Value
Master	<div><div></div></div>	<div><div></div></div>			36620	Master	<div><div></div></div>	<div><div></div></div>			34530	Master	<div><div></div></div>	<div><div></div></div>			24600
28350		41700		46300		25400		37700		42100		17850		26800		30050	
(Minimum)		(Nominal)		(Maximum)		(Minimum)		(Nominal)		(Maximum)		(Minimum)		(Nominal)		(Maximum)	
Phase	SS Wind 4	Water Hi	PE BSub	CPS	Value	Phase	SS Wind 5	Water Hi	PE BSub	CPS	Value	Phase	SS Wind 6	Water Hi	PE BSub	CPS	Value
Master	<div><div></div></div>	<div><div></div></div>			18230	Master	<div><div></div></div>	<div><div></div></div>			14220	Master	<div><div></div></div>	<div><div></div></div>			4645
13350		20100		22550		11100		15900		19200		3650		5400		6950	
(Minimum)		(Nominal)		(Maximum)		(Minimum)		(Nominal)		(Maximum)		(Minimum)		(Nominal)		(Maximum)	
Master: 17-JAN-2001 16:38																	

Slimhole Litho-Density Tool Master Calibration																	
MS Bkgd Subtracted Window Countrates																	
Phase	MS Wind 1	Water Lo	PE BSub	CPS	Value	Phase	MS Wind 2	Water Lo	PE BSub	CPS	Value	Phase	MS Wind 3	Water Lo	PE BSub	CPS	Value
Master		<div></div>			4488	Master		<div></div>			12000	Master		<div></div>			9540
	3050 (Minimum)	4900 (Nominal)		5650 (Maximum)			8650 (Minimum)	13300 (Nominal)		14700 (Maximum)			6800 (Minimum)	10700 (Nominal)		11950 (Maximum)	
Phase	MS Wind 4	Water Lo	PE BSub	CPS	Value	Phase	MS Wind 5	Water Lo	PE BSub	CPS	Value	Phase	MS Wind 6	Water Lo	PE BSub	CPS	Value
Master		<div></div>			7864	Master		<div></div>			9145	Master		<div></div>			1642
	5400 (Minimum)	8800 (Nominal)		10300 (Maximum)			6050 (Minimum)	10200 (Nominal)		12100 (Maximum)			700.0 (Minimum)	1800 (Nominal)		2650 (Maximum)	
Phase	MS Wind 1	Water Hi	PE BSub	CPS	Value	Phase	MS Wind 2	Water Hi	PE BSub	CPS	Value	Phase	MS Wind 3	Water Hi	PE BSub	CPS	Value
Master		<div></div>			3218	Master		<div></div>			9644	Master		<div></div>			8280
	2050 (Minimum)	3500 (Nominal)		4050 (Maximum)			6850 (Minimum)	10600 (Nominal)		11850 (Maximum)			6000 (Minimum)	9200 (Nominal)		10600 (Maximum)	
Phase	MS Wind 4	Water Hi	PE BSub	CPS	Value	Phase	MS Wind 5	Water Hi	PE BSub	CPS	Value	Phase	MS Wind 6	Water Hi	PE BSub	CPS	Value
Master		<div></div>			7000	Master		<div></div>			8153	Master		<div></div>			1440
	4700 (Minimum)	7800 (Nominal)		9200 (Maximum)			5250 (Minimum)	9100 (Nominal)		10900 (Maximum)			500.0 (Minimum)	1600 (Nominal)		2350 (Maximum)	
Master: 17-JAN-2001 16:38																	

Slimhole Litho-Density Tool Master Calibration																				
LS Bkgd Subtracted Window Countrates																				
Phase	LS Wind 1	Water Lo	PE	BSub	CPS	Value	Phase	LS Wind 2	Water Lo	PE	BSub	CPS	Value	Phase	LS Wind 3	Water Lo	PE	BSub	CPS	Value
Master						2093	Master						2832	Master						1985
1300 (Minimum)		2000 (Nominal)			2500 (Maximum)		1800 (Minimum)		2900 (Nominal)			3300 (Maximum)		1250 (Minimum)		2100 (Nominal)			2450 (Maximum)	
Phase	LS Wind 4	Water Lo	PE	BSub	CPS	Value	Phase	LS Wind 5	Water Lo	PE	BSub	CPS	Value	Phase	LS Wind 6	Water Lo	PE	BSub	CPS	Value

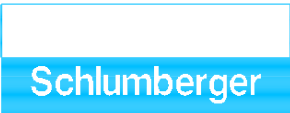
Phase	LS Wind 1	Water Hi	PE BSub	CPS	Value	Phase	LS Wind 2	Water Hi	PE BSub	CPS	Value	Phase	LS Wind 3	Water Hi	PE BSub	CPS	Value
Master					1508	Master					1506	Master					196.4
	850.0 (Minimum)	1600 (Nominal)	2050 (Maximum)				800.0 (Minimum)	1600 (Nominal)	2100 (Maximum)				100.0 (Minimum)	200.0 (Nominal)	500.0 (Maximum)		
Phase	LS Wind 1	Water Hi	PE BSub	CPS	Value	Phase	LS Wind 2	Water Hi	PE BSub	CPS	Value	Phase	LS Wind 3	Water Hi	PE BSub	CPS	Value
Master					1544	Master					2483	Master					1861
	900.0 (Minimum)	1400 (Nominal)	1850 (Maximum)				1550 (Minimum)	2400 (Nominal)	2900 (Maximum)				1100 (Minimum)	1900 (Nominal)	2250 (Maximum)		
Phase	LS Wind 4	Water Hi	PE BSub	CPS	Value	Phase	LS Wind 5	Water Hi	PE BSub	CPS	Value	Phase	LS Wind 6	Water Hi	PE BSub	CPS	Value
Master					1401	Master					1413	Master					192.9
	750.0 (Minimum)	1400 (Nominal)	1850 (Maximum)				750.0 (Minimum)	1400 (Nominal)	2050 (Maximum)				100.0 (Minimum)	200.0 (Nominal)	500.0 (Maximum)		
Master: 17-JAN-2001 16:38																	

Slimhole Litho-Density Tool Master Calibration														
Housing Diameter Wear Measurement														
Phase	Source Housing Wear Meas MM			Value	Phase	SS Housing Wear Meas MM			Value	Phase	MS Housing Wear Meas MM			Value
Master		<div></div>	63.62		Master		<div></div>	63.68		Master		<div></div>	63.66	
62.61 (Minimum) 63.50 (Nominal) 63.63 (Maximum)					62.61 (Minimum) 63.68 (Nominal) 63.83 (Maximum)					62.61 (Minimum) 63.68 (Nominal) 63.83 (Maximum)				
Phase	LS Housing Wear Meas MM			Value										
Master		<div></div>	63.62											
62.61 (Minimum) 63.68 (Nominal) 63.83 (Maximum)														
Master: 17-JAN-2001 16:38														

SLIM Telemetry Gamma-ray Cartridge - B / Equipment Identification	
Primary Equipment:	
STGC Gamma-ray & Accelerometer Cartridge	STGC - B
STGC Telemetry Cartridge	STGC - A
Auxiliary Equipment:	
SLIM Electronics Cartridge Housing	STGH - B

SLIM Telemetry Gamma-ray Cartridge - B Wellsite Calibration														
Detector Calibration														
Phase	Gamma Ray Background GAPI			Value	Phase	Gamma Ray (Jig - Bkg) GAPI			Value	Phase	Gamma Ray (Calibrated) GAPI			Value
Before	<div><div></div></div>			8.447	Before	<div><div></div></div>			144.9	Before	<div><div></div></div>			155.1
0 (Minimum)30.00 (Nominal)120.0 (Maximum)					131.7 (Minimum)144.9 (Nominal)158.0 (Maximum)					140.1 (Minimum)155.1 (Nominal)170.1 (Maximum)				
Before: 17-JAN-2001 16:44														

<div>COMPANY:</div> <div>WELL:</div> <div>FIELD:</div> <div>PROVINCE:</div>	<div>DEER LAKE OIL & GAS INC.</div> <div>DEER LAKE OIL & GAS ET AL WESTERN ADVENTURE N</div> <div>EXPLORATORY</div> <div>NEWFOUNDLAND</div>	BOTTOM LOG INTERVAL	1572 m
		SCHLUMBERGER DEPTH	1575 m
		DEPTH DRILLER	1584 m
		KELLY BUSHING	92.5 m
		DRILL FLOOR	92.5 m
		GROUND LEVEL	90 m



SLIM ACCESS
LITHO DENSITY